

CATALOGUE

ASTURO III EC®

2018.2019



WWW.WALMEC.COM

EN

SPRAY GUNS

Diecimila series	4
Seimila series	9
OM - IM - UR PLUS series	12
Graphic series	16
Special series	19
Main spray gun spare parts	22
Painting accessories	29

PRESSURIZED CONTAINERS

SSP and accessories	34
---------------------	----

COMPRESSED AIR GUNS

Blow guns	38
Inflating guns	46
Washing guns	50
Sandblasting guns	52
Guns for protective and sealant compounds	55
Grease guns	58
Vacuum Cleaner	60

PNEUMATIC TOOLS

Pneumatic tools	61
-----------------	----

COUPLINGS AND PLUGS

X300 U	65
X300	66
X400	67
X100 S	68
X90	69
Steel plugs	70

FITTINGS

Sliding and drain cocks	72
Connections	72-74
Fittings	75-77

Accessories for pneumatics

Needle air line taps	78
Mini ball valves	78
Quick fittings	79
Connections with ferrules	80
Automatic fittings	81-82

Modular filters regulators lubricators

Filters	83
---------	----

Gauge and air compressed accessories

Gauges and accessories	85
------------------------	----

Hoses

Hoses	87
-------	----

HOBBY LINE

PRIMA and spare parts	92
Compressed air guns	93

Blister

Paint Spray guns	95
Air compressed guns	97-98
Pneumatic Tools	98-99
5 pieces Kit	100
6 pieces Kit - Air compressor accessories	101
Automatic quick couplings and plugs	102-103
Fittings	104-106

DISPLAYS

Displays	107
----------	-----

KEY OF THE SYMBOLS USED:


body shop



building



touch-up



decoration



industry



woodworking



COMPANY 3.0



A history of over 70 years of activity makes Walmec one of the more long living companies, not only in the pressurized air scenario, but also in the whole national territory.

This is source of great pride for us, because it show how far can a company go, if it puts customers' satisfaction as its first goal.

Behind all those years there the sacrifices of lot of people that have devoutly dedicated their time, passion, professionalism to our cause, there are ideas, chance but, above all, the strong will to never stop. Coming from all of us.

Today we need to look further more than ever.

Markets are growing, evolving, demanding.

Companies have to satisfy all of the needs they dictate, needs that are not simply involving the creation of a new product or a fast service.

Innovation, quality, promptness are just the basic requisite for a company that wants to survive in nowadays market.

70 years old Walmec wants to amaze who believes that the productive future is only tied to certain areas by continuing to offer a 100% MADE IN ITALY product.

Amaze who believes that manufacturing technologies are already established by investing and renewing its equipment with constantly more advanced CNC, automate and incredibly precise. Amaze who believes that you cannot go beyond some predetermined frameworks of products' constructive nature by exploring unused and charming roads, made of hyper technological and super performing materials.

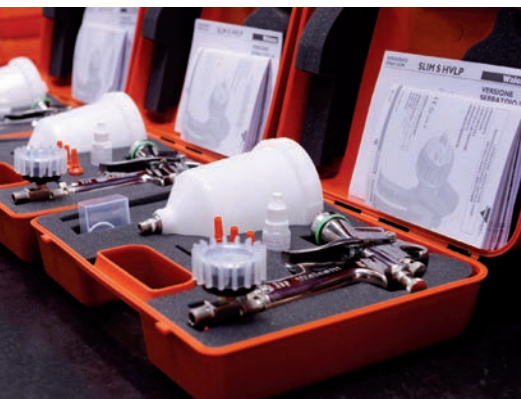
To amaze is simply to think outside the box and to allow all the people that work with our products to find non just the quality, the price and the service that they righteously demand, but above all to try something completely unexpected, unthinkable, unpredictable.

Walmec is ready for it and we are sure that we together will amaze.



WALMEC S.P.A.
IS UNI EN ISO 9001:2008 CERTIFIED
WITH CERTIFICATE NR. 343/96/S

WWW.WALMEC.COM



DIECIMILA series

New and performing line of spray guns, replacing the famous 9000 models, its predecessor was one of the greatest in the industry.

Developed following a new concept, air valve and needle on a single axis for more precision, functionality and easy maintenance.

The spray gun body is nickered plated aluminum, lighter for better handling; the air cap is nickered plated brass to guarantee high performance in atomizing and ideal fan.

The 10000 series is available in 3 versions:

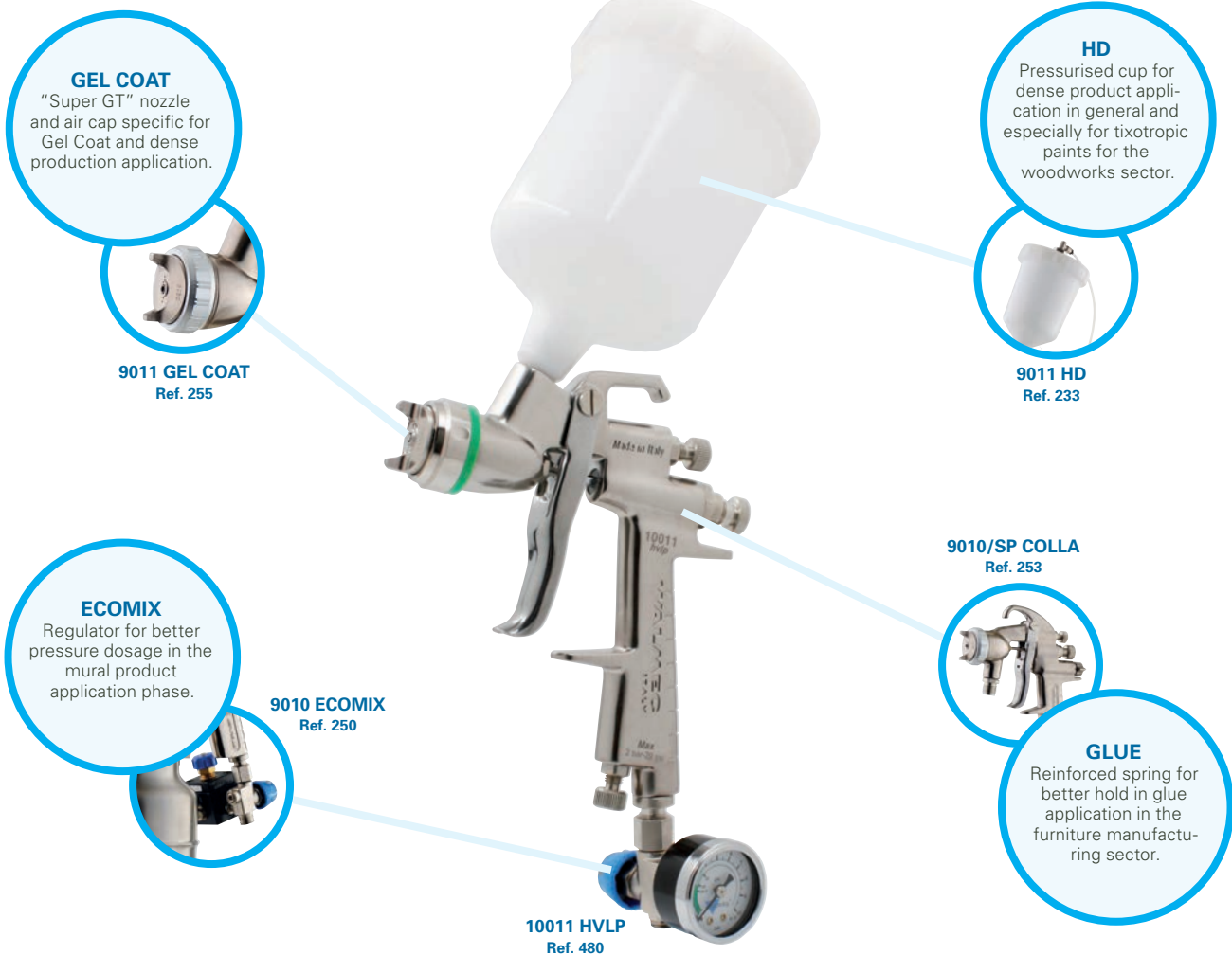
- HVLP as from norm n. 1151 SCAQMD, 0.7 bar pressure at the air cap and over 65% transfer efficiency.

Low air consumption 230 l/min, LV system (low volume) it makes it a very efficient tool, able to perform even with smaller compressors.

- HTE the new and high transfer efficiency system (>65%), an excellent atomizing quality by the 1.3 bar air cap pressure

- HTE SR the same HTE features but without the air gage regulator.

In this section you can find also the special application spray guns line: GEL COAT - ECOMIX - GLU - HIGH DENSITY (still on the 9000 series spray gun body) able to offer ideal solutions for industrial and shipyard application.



PACKAGING

All spray guns of the Diecimila series are supplied in handy rigid plastic suitcases containing all the accessories for a correct cleaning and maintenance.

10011 HVLP (with 680 cc nylon cup) - Ref. 480**

Body: chemical nickel-plated polished aluminium
 Air cap: chemical nickel-plated brass
 Nozzle: AISI 303 stainless steel
 Needle-spring: stainless steel
 Weight: 935 g

Operating air pressure: 2.0 bar
 Air consumption: 230 l/min.
 Ø nozzle: 1.3 - 1.5 - 1.7 - 1.9 - 2.2

Air inlet pressure regulator with pressure gauge

500 cc aluminium cup version (Weight: 835 g)	Ref. 481**
750 cc aluminium cup version (Weight: 880 g)	Ref. 482**



NOTE:
add nozzle Ø to Ref. (**)

Recommended use:



10010 HVLP Ref. 485**

Camlock suction cup: aluminium 1000 cc
 Body: chemical nickel-plated polished aluminium
 Air cap: chemical nickel-plated brass
 Nozzle: AISI 303 stainless steel
 Needle-spring: stainless steel
 Weight: 1.15 Kg

Operating air pressure: 2.0 bar
 Air consumption: 230 l/min.
 Ø nozzle: 1.7 - 1.9 - 2.2

Air inlet pressure regulator with pressure gauge



NOTE:
add nozzle Ø to Ref. (**)

Recommended use:



10010 HVLP Ref. 486**

Bayonet suction cup: aluminium 1000 cc
 Body: chemical nickel-plated polished aluminium
 Air cap: chemical nickel-plated brass
 Nozzle: AISI 303 stainless steel
 Needle-spring: stainless steel
 Weight: 1.13 Kg

Operating air pressure: 2.0 bar
 Air consumption: 230 l/min.
 Ø nozzle: 1.7 - 1.9 - 2.2

Air inlet pressure regulator with pressure gauge



NOTE:
add nozzle Ø to Ref. (**)

Recommended use:



10010/SP HVLP Ref. 487**

To be used through pressurized containers, low pressure pumps product inlet M1/4"
 Body: chemical nickel-plated polished aluminium
 Air cap: chemical nickel-plated brass
 Nozzle: AISI 303 stainless steel
 Needle-spring: stainless steel
 Weight: 750 g

Operating air pressure: 2.0 bar
 Air consumption: 230 l/min.
 Ø nozzle: 1.0 - 1.3 - 1.5 - 1.7 - 1.9 - 2.2

Air inlet pressure regulator with pressure gauge



NOTE:
add nozzle Ø to Ref. (**)

Recommended use:



10011 HTE (with 680 cc nylon cup) - Ref. 489**

Body: chemical nickel-plated polished aluminium
 Air cap: chemical nickel-plated brass
 Nozzle: AISI 303 stainless steel
 Needle-spring: stainless steel
 Weight: 935 g

Operating air pressure: 2.0 - 2.5 bar
 Air consumption: 220 - 260 l/min.
 Ø nozzle: 1.0 - 1.2 - 1.3 - 1.5 - 1.7 - 1.9 - 2.2 - 2.5

Air inlet pressure regulator with pressure gauge

500 cc aluminium cup version (Weight: 670 g)	Ref. 493**
750 cc aluminium cup version (Weight: 720 g)	Ref. 488**



NOTE:
add nozzle Ø to Ref. (**)

Recommended use:



10010 HTE Ref. 484**

Camlock suction cup: aluminium 1000 cc
 Body: chemical nickel-plated polished aluminium
 Air cap: chemical nickel-plated brass
 Nozzle: AISI 303 stainless steel
 Needle-spring: stainless steel
 Weight: 1.15 Kg

Operating air pressure: 2.0 - 2.5 bar
 Air consumption: 220 - 260 l/min.
 Ø nozzle: 1.0 - 1.2 - 1.3 - 1.5 - 1.7 - 1.9 - 2.2 - 2.5

Air inlet pressure regulator with pressure gauge



NOTE:
add nozzle Ø to Ref. (**)

Recommended use:



10010 HTE Ref. 494**

Bayonet suction cup: aluminium 1000 cc
 Body: chemical nickel-plated polished aluminium
 Air cap: chemical nickel-plated brass
 Nozzle: AISI 303 stainless steel
 Needle-spring: stainless steel
 Weight: 1.13 Kg

Operating air pressure: 2.0 - 2.5 bar
 Air consumption: 220 - 260 l/min.
 Ø nozzle: 1.0 - 1.2 - 1.3 - 1.5 - 1.7 - 1.9 - 2.2 - 2.5

Air inlet pressure regulator with pressure gauge



NOTE:
add nozzle Ø to Ref. (**)

Recommended use:



10010/SP HTE Ref. 483**

To be used through pressurized containers, low pressure pumps product inlet M1/4"
 Body: chemical nickel-plated polished aluminium
 Air cap: chemical nickel-plated brass
 Nozzle: AISI 303 stainless steel
 Needle-spring: stainless steel
 Weight: 750 g

Operating air pressure: 2.0 - 2.5 bar
 Air consumption: 220 - 260 l/min.
 Ø nozzle: 1.0 - 1.2 - 1.3 - 1.5 - 1.7 - 1.9 - 2.2

Air inlet pressure regulator with pressure gauge



NOTE:
add nozzle Ø to Ref. (**)

Recommended use:



10011 HTE SR (with 680 cc nylon cup) - Ref. 490**

Body: chemical nickel-plated polished aluminium
 Air cap: chemical nickel-plated brass
 Nozzle: AISI 303 stainless steel
 Needle-spring: stainless steel
 Weight: 785 g

Operating air pressure: 2.0 - 2.5 bar
 Air consumption: 220 - 260 l/min.
 Ø nozzle: 1.0 - 1.2 - 1.3 - 1.5 - 1.7 - 1.9 - 2.2 - 2.5

500 cc aluminium cup version (Weight: 670 g)	Ref. 491**
750 cc aluminium cup version (Weight: 720 g)	Ref. 492**



NOTE:
 add nozzle Ø to Ref. (**)

Recommended use:



10010 HTE SR Ref. 495**

Camlock suction cup: aluminium 1000 cc
 Body: chemical nickel-plated polished aluminium
 Air cap: chemical nickel-plated brass
 Nozzle: AISI 303 stainless steel
 Needle-spring: stainless steel
 Weight: 980 g

Operating air pressure: 2.0 - 2.5 bar
 Air consumption: 220 - 260 l/min.
 Ø nozzle: 1.0 - 1.2 - 1.3 - 1.5 - 1.7 - 1.9 - 2.2 - 2.5



NOTE:
 add nozzle Ø to Ref. (**)

Recommended use:



10010 HTE SR Ref. 496**

Bayonet suction cup: aluminium 1000 cc
 Body: chemical nickel-plated polished aluminium
 Air cap: chemical nickel-plated brass
 Nozzle: AISI 303 stainless steel
 Needle-spring: stainless steel
 Weight: 970 g

Operating air pressure: 2.0 - 2.5 bar
 Air consumption: 220 - 260 l/min.
 Ø nozzle: 1.0 - 1.2 - 1.3 - 1.5 - 1.7 - 1.9 - 2.2 - 2.5



NOTE:
 add nozzle Ø to Ref. (**)

Recommended use:



10010/SP HTE SR Ref. 497**

To be used through pressurized containers, low pressure pumps product inlet M1/4"
 Body: chemical nickel-plated polished aluminium
 Air cap: chemical nickel-plated brass
 Nozzle: AISI 303 stainless steel
 Needle-spring: stainless steel
 Weight: 600 g

Operating air pressure: 2.0 - 2.5 bar
 Air consumption: 220 - 260 l/min.
 Ø nozzle: 1.0 - 1.2 - 1.3 - 1.5 - 1.7 - 1.9 - 2.2



NOTE:
 add nozzle Ø to Ref. (**)

Recommended use:



10011 HVLP HD

Ref. 498**

10011 HTE HD

Ref. 499**

Pressurised gravity cup (M 1/4" product inlet): for high density products such as latex, polyurethane, gel coat, tixotropic products in the wood and industrial sectors.

Body: chemically nickel plated polished aluminium

Nozzle: AISI 303 stainless steel

Air cap: chemically nickeled brass

Needle-spring: stainless steel

Weight: 1.25 Kg

Operating air pressure: 2.0 - 2.5 bar

Air consumption: 200 - 240 l/min. for HVLP - 240 - 280 l/min. for HTE

Ø nozzle: 1.3 - 1.5 - 1.7 - 1.9 - 2.2

Double spray gun air inlet pressure regulator and pressurised cup with pressure gauge



NOTE:
add nozzle Ø to Ref. (**)

Recommended use:



9010 ECOMIX

Adjustable suction pressure bayonet cup:

1000 cc stainless steel

Ref. 250**

9010/SP ECOMIX

To be used through pressurized containers, low pressure pumps - Product inlet M1/4"

Ref. 251**

Body: chemically nickel plated polished aluminium

Air cap: chemically nickeled brass

Needle-nozzle-springs: stainless steel

Adjustments: air-product-fan

Cup gasket: o-ring in EPDM - (only version Ref. 250**)

Use: application of wall paints in the building sector

Weight: 940 g Ecomix - 610 g Ecomix SP

Operating air pressure: 2.5 - 3.0 bar

Air consumption: 200 - 240 l/min.

Ø nozzle: 2.2 - 2.5 - 3.0

Equipped with regulator group of the air inlet flow and air pressure to the cup - vers. Ref. 250**



NOTE:
add nozzle Ø to Ref. (**)

Recommended use:



9011 GEL COAT

Cup: nylon 680 cc

Ref. 255**

9010/SP GEL COAT

To be used through pressurized containers, low pressure pumps - Product inlet M1/4"

Ref. 256**

Body: chemical nickel-plated polished aluminium

Air cap: chemical nickel-plated brass

Needle-spring-nozzle: stainless steel

Adjustments: air-product-fan

Use: for application of Gel Coat and dense products generally

Weight: 810 g Gel Coat - 590 g Gel Coat SP

Operating air pressure: 2.0 - 3.0 bar

Air consumption: 180 - 240 l/min.

Ø nozzle: 3.0 - 4.0 - 5.0



NOTE:
add nozzle Ø to Ref. (**)

Recommended use:



9010/SP COLLA

Ref. 253**

To be used through pressurized containers, low pressure pumps - Product inlet M1/4"

Body: chemically nickel plated polished aluminium

Air cap: chemically nickeled brass

Needle-nozzle-springs: stainless steel

Adjustments: product-fan

Weight: 590 g

Operating air pressure: 2.5 - 3.0 bar

Air consumption: 180 - 240 l/min.

Ø nozzle: 1.7 - 1.9



NOTE:
add nozzle Ø to Ref. (**)

Recommended use:



SEIMILA series

The new line of high performance spray guns in terms of both fan and atomization and durability and reliability. Manufactured with all of Astuomec®'s experience as a guarantee, they are the maximum expression of an ideal spray gun for all sectors that require quality paint results associated with efficiency.

From bodyworks to woodworks, industry and crafts, the new SEIMILA series was specifically designed to fully enhance the operator's work.

Available in the HVLP version (0.7 bar at air cap; transfer efficiency > 65%) and HTE version, this spray gun comes with a highly pulverising HT air cap and is built to resist aggression from all types of solvents.

The lack of gaskets, thanks to high precision mechanical processing, guarantees that highly desired durability appreciated by operators in the various reference sectors.

HT AIR CAP
Highly pulverising air cap, it guarantees high paint performance and low product consumption.

BODY
Polished and treated die-cast aluminium to guarantee the utmost precision, resistance, ergonomics and durability.

LEVER
Made of nickel-plated steel, ergonomic and with the right size for accurate air and product dosage.

ADJUSTMENTS
Accurate and reliable, they are a key element for a leading spray gun in all paint sectors.

6011 HVLP
Ref. 460



6011 HVLP (with 680 cc nylon cup) - Ref. 460**

Body: polished and treated aluminium
 HT Air cap: nickel-plated brass
 Needle-spring-nozzle: stainless steel
 Adjustments: product-fan
 Weight: 755 g

Operating air pressure: 2.5 - 3.0 bar
 Air consumption: 180 - 220 l/min.
 Ø nozzle: 1.2 - 1.4 - 1.7 - 1.9 - 2.2 - 2.5 - 3.0

500 cc aluminium cup version	(Weight: 670 g)	Ref. 461**
750 cc aluminium cup version	(Weight: 720 g)	Ref. 462**



NOTE:
 add nozzle Ø to Ref. (**)

Recommended use:



6010 HVLP Ref. 465**

Camlock suction cup: aluminium 1000 cc
 Body: polished and treated aluminium
 HT Air cap: nickel-plated brass
 Needle-spring-nozzle: stainless steel
 Adjustments: product-fan
 Weight: 990 g

Operating air pressure: 2.5 - 3.0 bar
 Air consumption: 220 - 240 l/min.
 Ø nozzle: 1.2 - 1.4 - 1.7 - 1.9 - 2.2 - 2.5 - 3.0



NOTE:
 add nozzle Ø to Ref. (**)

Recommended use:



6010 HVLP Ref. 466**

Bayonet suction cup: aluminium 1000 cc
 Body: polished and treated aluminium
 HT Air cap: nickel-plated brass
 Needle-spring-nozzle: stainless steel
 Adjustments: product-fan
 Weight: 920 g

Operating air pressure: 2.5 - 3.0 bar
 Air consumption: 220 - 240 l/min.
 Ø nozzle: 1.2 - 1.4 - 1.7 - 1.9 - 2.2 - 2.5 - 3.0



NOTE:
 add nozzle Ø to Ref. (**)

Recommended use:



6010/SP HVLP Ref. 467**

To be used through pressurized containers, low pressure pumps - Product inlet M1/4"
 Body: polished and treated aluminium
 HT Air cap: nickel-plated brass
 Needle-spring-nozzle: stainless steel
 Adjustments: product-fan
 Weight: 590 g

Operating air pressure: 2.5 - 3.0 bar
 Air consumption: 220 - 240 l/min.
 Ø nozzle: 1.2 - 1.4 - 1.7 - 1.9 - 2.2 - 2.5 - 3.0



NOTE:
 add nozzle Ø to Ref. (**)

Recommended use:



6011 HTE (with 680 cc nylon cup) - Ref. 470**

Body: polished and treated aluminium
 HT Air cap: nickel-plated brass
 Needle-spring-nozzle: stainless steel
 Adjustments: product-fan
 Weight: 755 g

Operating air pressure: 2.5 - 3.0 bar
 Air consumption: 180 - 220 l/min.
 Ø nozzle: 1.2 - 1.4 - 1.7 - 1.9 - 2.2 - 2.5 - 3.0

500 cc aluminium cup version	(Weight: 670 g)	Ref. 471**
750 cc aluminium cup version	(Weight: 720 g)	Ref. 472**



NOTE:
 add nozzle Ø to Ref. (**)

Recommended use:



6010 HTE Ref. 475**

Camlock suction cup: aluminium 1000 cc
 Body: polished and treated aluminium
 HT Air cap: nickel-plated brass
 Needle-spring-nozzle: stainless steel
 Adjustments: product-fan
 Weight: 990 g

Operating air pressure: 2.5 - 3.0 bar
 Air consumption: 220 - 240 l/min.
 Ø nozzle: 1.2 - 1.4 - 1.7 - 1.9 - 2.2 - 2.5 - 3.0



NOTE:
 add nozzle Ø to Ref. (**)

Recommended use:



6010 HTE Ref. 476**

Bayonet suction cup: aluminium 1000 cc
 Body: polished and treated aluminium
 HT Air cap: nickel-plated brass
 Needle-spring-nozzle: stainless steel
 Adjustments: product-fan
 Weight: 920 g

Operating air pressure: 2.5 - 3.0 bar
 Air consumption: 220 - 240 l/min.
 Ø nozzle: 1.2 - 1.4 - 1.7 - 1.9 - 2.2 - 2.5 - 3.0



NOTE:
 add nozzle Ø to Ref. (**)

Recommended use:



6010/SP HTE Ref. 477**

To be used through pressurized containers, low pressure pumps - Product inlet M1/4"
 Body: polished and treated aluminium
 HT Air cap: nickel-plated brass
 Needle-spring-nozzle: stainless steel
 Adjustments: product-fan
 Weight: 590 g

Operating air pressure: 2.5 - 3.0 bar
 Air consumption: 220 - 240 l/min.
 Ø nozzle: 1.2 - 1.4 - 1.7 - 1.9 - 2.2 - 2.5 - 3.0



NOTE:
 add nozzle Ø to Ref. (**)

Recommended use:



OM-IM-UR PLUS series

Spray guns designed to combine reliability, versatility and price. Their strength has made them the market leaders since their launch in the 50s. But the strength of a product can be seen by the way it develops, so, in 1999, the HVLP version of the OM was created to meet the needs of the most sensitive markets in terms of product saving and environmental regulations.

The professional IM/OM version originated the creation of the UR PLUS version, with brass components which, considering the quality/price ratio, makes the product also suitable for D.I.Y.

**UR PLUS
UR/S PLUS**
Brass needle and nozzle, improved quality/price ratio without compromising reliability and performance.

UR/S PLUS
Ref. 273

IM - OM
CNC processed single-body brass, for years a guarantee for durability, resilience and performance. In short, IM-OM.

IM
Ref. 262

OM
Ref. 263

OM GREEN
Ref. 290

OM GREEN
Green grip to demonstrate ecology, paint product saving but with Astuomec® IM-OM quality.

OM GREEN (with 680 cc nylon cup) - Ref. 290**

Body: nickel-plated sanded brass
 Air cap: nickel-plated brass
 Needle-nozzle-springs: stainless steel
 Adjustments: product-fan
 Weight: 780 g

Operating air pressure: 2.0 bar
 Air consumption: 200 l/min.
 Ø nozzle: 1.4 - 1.7 - 1.9 - 2.2

HVLP system: low overspray, significant paint product savings

250 cc nylon cup version	(Weight: 670 g)	Ref. 291**
500 cc aluminium cup version	(Weight: 680 g)	Ref. 292**
750 cc aluminium cup version	(Weight: 730 g)	Ref. 293**



NOTE:
add nozzle Ø to Ref. (**)

Recommended use:



IM GREEN Ref. 307**

Camlock suction cup: aluminium 1000 cc
 Body: nickel-plated sanded brass
 Air cap: nickel-plated brass
 Needle-nozzle-springs: stainless steel
 Adjustments: product-fan
 Weight: 1.01 Kg

Operating air pressure: 2.0 bar
 Air consumption: 200 l/min.
 Ø nozzle: 1.4 - 1.7 - 1.9 - 2.2

HVLP system: low overspray, significant paint product savings



NOTE:
add nozzle Ø to Ref. (**)

Recommended use:



IM GREEN Ref. 308**

Bayonet suction cup: aluminium 1000 cc
 Body: nickel-plated sanded brass
 Air cap: nickel-plated brass
 Needle-nozzle-springs: stainless steel
 Adjustments: product-fan
 Weight: 950 g

Operating air pressure: 2.0 bar
 Air consumption: 200 l/min.
 Ø nozzle: 1.4 - 1.7 - 1.9 - 2.2

HVLP system: low overspray, significant paint product savings



NOTE:
add nozzle Ø to Ref. (**)

Recommended use:



IM/SP GREEN Ref. 309**

To be used through pressurized containers, low pressure pumps - Product inlet M1/4"
 Body: nickel-plated sanded brass
 Air cap: nickel-plated brass
 Needle-nozzle-springs: stainless steel
 Adjustments: product-fan
 Weight: 620 g

Operating air pressure: 2.0 bar
 Air consumption: 200 l/min.
 Ø nozzle: 1.4 - 1.7 - 1.9 - 2.2

HVLP system: low overspray significant paint product savings



NOTE:
add nozzle Ø to Ref. (**)

Recommended use:



OM (with 680 cc nylon cup) - Ref. 263**

Body: nickel-plated sanded brass
 Air cap: nickel-plated brass
 Needle-nozzle-springs: stainless steel
 Adjustments: product-fan
 Weight: 780 g

Operating air pressure: 3.0 - 3.5 bar
 Air consumption: 220 l/min.
 Ø nozzle: 1.0 - 1.2 - 1.4 - 1.7 - 1.9 - 2.2 - 2.5 - 3.0 - 3.5 - 4.0

250 cc nylon cup version	(Weight: 670 g)	Ref. 264**
500 cc aluminium cup version	(Weight: 680 g)	Ref. 266**
750 cc aluminium cup version	(Weight: 730 g)	Ref. 265**



NOTE:
add nozzle Ø to Ref. (**)

Recommended use:



IM Ref. 262**

Camlock suction cup: aluminium 1000 cc
 Body: nickel-plated sanded brass
 Air cap: nickel-plated brass
 Needle-nozzle-springs: stainless steel
 Adjustments: product-fan
 Weight: 1.01 Kg

Operating air pressure: 3.0 - 3.5 bar
 Air consumption: 200 - 350 l/min.
 Ø nozzle: 1.2 - 1.4 - 1.7 - 1.9 - 2.2 - 2.5 - 3.0



NOTE:
add nozzle Ø to Ref. (**)

Recommended use:



IM Ref. 260**

Bayonet suction cup: aluminium 1000 cc
 Body: nickel-plated sanded brass
 Air cap: nickel-plated brass
 Needle-nozzle-springs: stainless steel
 Adjustments: product-fan
 Weight: 950 g

Operating air pressure: 3.0 - 3.5 bar
 Air consumption: 200 - 350 l/min.
 Ø nozzle: 1.2 - 1.4 - 1.7 - 1.9 - 2.2 - 2.5 - 3.0



NOTE:
add nozzle Ø to Ref. (**)

Recommended use:



IM/SP Ref. 269**

To be used through pressurized containers, low pressure pumps - Product inlet M1/4"
 Body: nickel-plated sanded brass
 Air cap: nickel-plated brass
 Needle-nozzle-springs: stainless steel
 Adjustments: product-fan
 Weight: 620 g

Operating air pressure: 3.0 - 3.5 bar
 Air consumption: 200 - 350 l/min.
 Ø nozzle: 1.2 - 1.4 - 1.7 - 1.9 - 2.2 - 2.5 - 3.0



NOTE:
add nozzle Ø to Ref. (**)

Recommended use:



UR/S PLUS (with 680 cc nylon cup) - Ref. 273**

Body: nickel-plated sanded brass
 Air cap: nickel-plated brass
 Needle-nozzle: brass
 Adjustments: product-fan
 Weight: 795 g

Operating air pressure: 3.0 - 3.5 bar
 Air consumption: 200 - 350 l/min.
 Ø nozzle: 1.2 - 1.4 - 1.7 - 1.8 - 1.9 - 2.2 - 2.5 - 3.0

250 cc nylon cup version	(Weight: 670 g)	Ref. 274**
500 cc aluminium cup version	(Weight: 680 g)	Ref. 276**
750 cc aluminium cup version	(Weight: 730 g)	Ref. 275**



NOTE:
 add nozzle Ø to Ref. (**)

Recommended use:



UR PLUS Ref. 272**

Camlock suction cup: aluminium 1000 cc
 Body: nickel-plated sanded brass
 Air cap: nickel-plated brass
 Needle-nozzle: brass
 Adjustments: product-fan
 Weight: 1.01 Kg

Operating air pressure: 3.0 - 3.5 bar
 Air consumption: 200 - 350 l/min.
 Ø nozzle: 1.2 - 1.4 - 1.7 - 1.8 - 1.9 - 2.2 - 2.5 - 3.0



NOTE:
 add nozzle Ø to Ref. (**)



UR PLUS Ref. 270**

Bayonet suction cup: aluminium 1000 cc
 Body: nickel-plated sanded brass
 Air cap: nickel-plated brass
 Needle-nozzle: brass
 Adjustments: product-fan
 Weight: 950 g

Operating air pressure: 3.0 - 3.5 bar
 Air consumption: 200 - 350 l/min.
 Ø nozzle: 1.2 - 1.4 - 1.7 - 1.8 - 1.9 - 2.2 - 2.5 - 3.0



NOTE:
 add nozzle Ø to Ref. (**)

Recommended use:



UR PLUS/SP Ref. 279**

To be used through pressurized containers, low pressure pumps - Product inlet M1/4"
 Body: nickel-plated sanded brass
 Air cap: nickel-plated brass
 Needle-nozzle-springs: stainless steel
 Adjustments: product-fan
 Weight: 620 g

Operating air pressure: 3.0 - 3.5 bar
 Air consumption: 200 - 350 l/min.
 Ø nozzle: 1.2 - 1.4 - 1.7 - 1.9 - 2.2 - 2.5 - 3.0



NOTE:
 add nozzle Ø to Ref. (**)

Recommended use:



GRAPHIC series

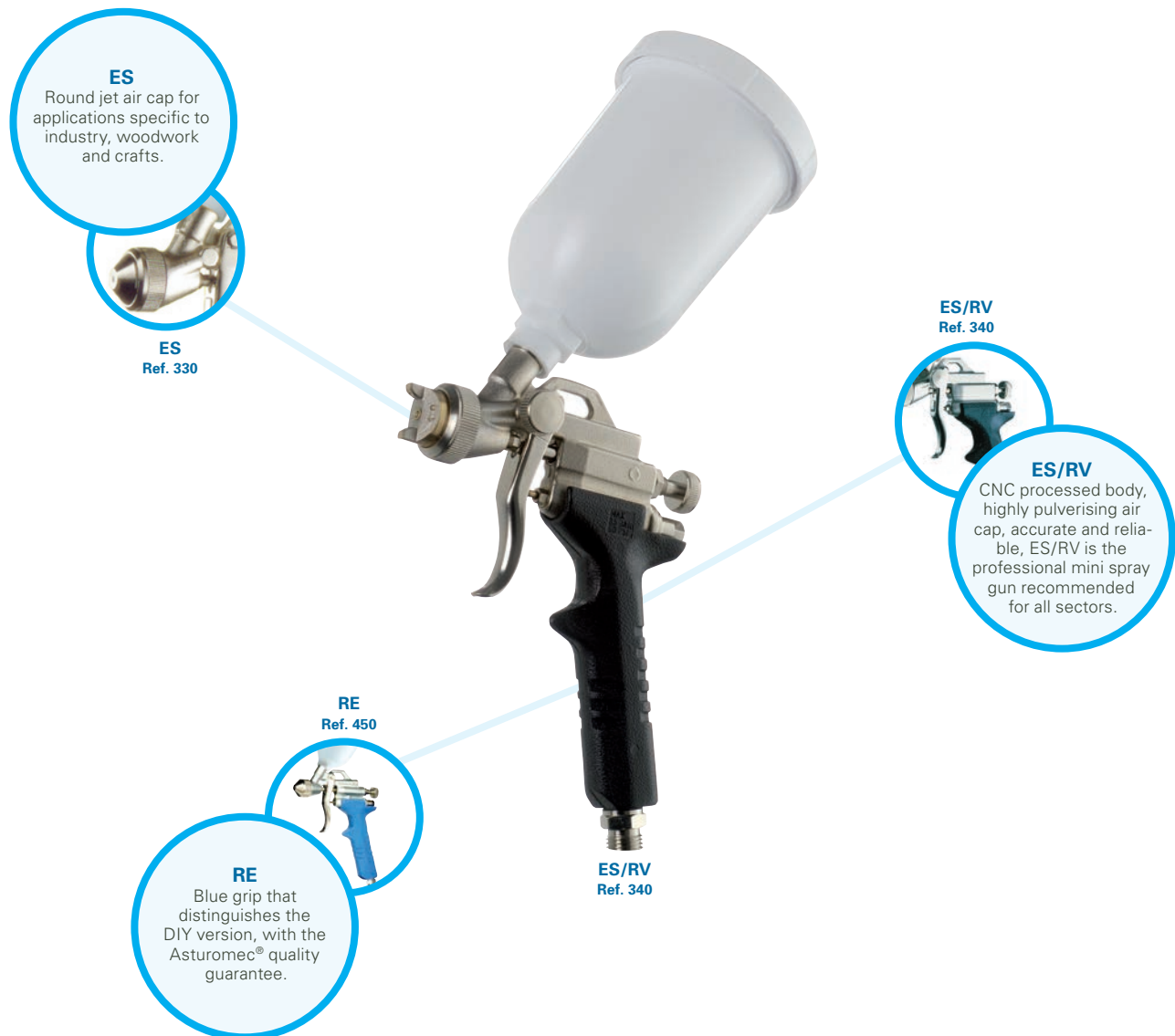
Mini high-precision professional spray guns for applications on small surfaces.

The easy application and lightness of these spray guns make them ideal, besides for the industry also for body shops, woodworking.

Thanks to the high quality level this spray gun is also suitable for professional decorators and D.I.Y.

Available with a number of different sized cups according to the specific application.

The new RE version was designed to meet the ever-growing demands of the DIY market, combining the advantages of a quality mini spray gun with an undoubtedly competitive price.



PACKAGING

Packaging designed to contain a complete set for the decorator. Available in a handy rigid plastic suitcase which allows an ideal set-up of the equipment.

ES/RV (with 250 cc nylon cup) - Ref. 340**

Body: nickel-plated sanded brass
 Air cap: nickel-plated brass
 Needle-nozzle-springs: stainless steel
 Adjustments: product-fan
 Weight: 475 g

Operating air pressure: 1.0 - 3.5 bar
 Air consumption: 30 - 60 l/min.
 Ø nozzle: 0.5 - 0.7 - 1.0 - 1.2

75 cc nylon cup version	(Weight: 410 g)	Ref. 341**
125 cc aluminium cup version	(Weight: 425 g)	Ref. 343**



NOTE:
 add nozzle Ø to Ref. (**)

Recommended use:



ES (with 250 cc nylon cup) - Ref. 330**

Body: nickel-plated sanded brass
 Air cap: nickel-plated brass
 Needle-nozzle-springs: stainless steel
 Adjustments: product
 Weight: 465 g

Operating air pressure: 1.0 - 3.5 bar
 Air consumption: 30 - 60 l/min
 Ø nozzle: 0.3 - 0.5 - 0.7 - 1.0

75 cc nylon cup version	(Weight: 400 g)	Ref. 331**
125 cc aluminium cup version	(Weight: 415 g)	Ref. 333**

Versions with 0.3 nozzle Ø



NOTE:
 add nozzle Ø to Ref. (**)

Recommended use:



RE (with 250 cc nylon cup) - Ref. 450**

Body: sanded and galvanised Zama
 Air cap: nickel-plated brass
 Needle-springs: stainless steel
 Adjustments: product
 Weight: 360 g

Operating air pressure: 1.0 - 3.5 bar
 Air consumption: 30 - 60 l/min
 Ø nozzle: 0.3 - 0.5 - 0.7 - 1.0 - 1.2

75 cc nylon cup version	(Weight: 300 g)	Ref. 451**
125 cc aluminium cup version	(Weight: 320 g)	Ref. 452**

Versions with 0.3 nozzle Ø



NOTE:
 add nozzle Ø to Ref. (**)

Recommended use:



DECOR BAG Ref. 39000

Kit for the professional decorator packed in suitcase.
 Featuring:
 1 airbrush GRAPHIQUE
 1 spray gun ES/RV Ø 0.5 with gravity nylon cup, capacity 75 cc
 1 needle - nozzle - air cap kit Ø 0.3
 1 DECOR KIT
 1 air hose Ø 4x6, m 1.5 with fittings

Weight: 1.63 Kg
 Solid suitcase



NOTE:
 add nozzle Ø to Ref. (**)



GRAPHIQUE

Ref. 39003

Professional double action airbrush for airwork and decorating.
 Body: nickel-plated brass
 Nozzle: stainless steel
 Needle-springs-paint passage: stainless steel
 Double cup: gravity cup in anodized aluminium capacity 4 cc
 suction cup in glass, capacity 20 cc
 Featuring: fitting for hose Ø 4x6- service spanner - support

Weight: 300 g
 Operating air pressure: 0.5-3.5 bar
 Air consumption: 10-25 l/min.



Recommended use:



DECOR KIT

Ref. 34500

Ideal for the simultaneous use of more than one product with spray gun EGO HVLP and GRAPHIQUE spray guns.
 Featuring: 5 glass cups, capacity 20 cc
 unscrewable adaptor for EGO HVLP

Weight: 210 g



In order to clean your spray gun more rapidly, we suggest that you reserve a cup for the diluent.



Recommended use:



SPECIAL series

G1 SERIES: Spray guns indicated for the application of high density products to obtain a high finish orange peel or sponge effect.

Recommended in all those sectors where a normal spray guns does not provide sufficient yield in spraying these products.

The stainless steel cup and NBR gaskets features make this product resistant to the most aggressive solvents and most improper maintenance.

The new regulator also guarantees constant cup pressure.

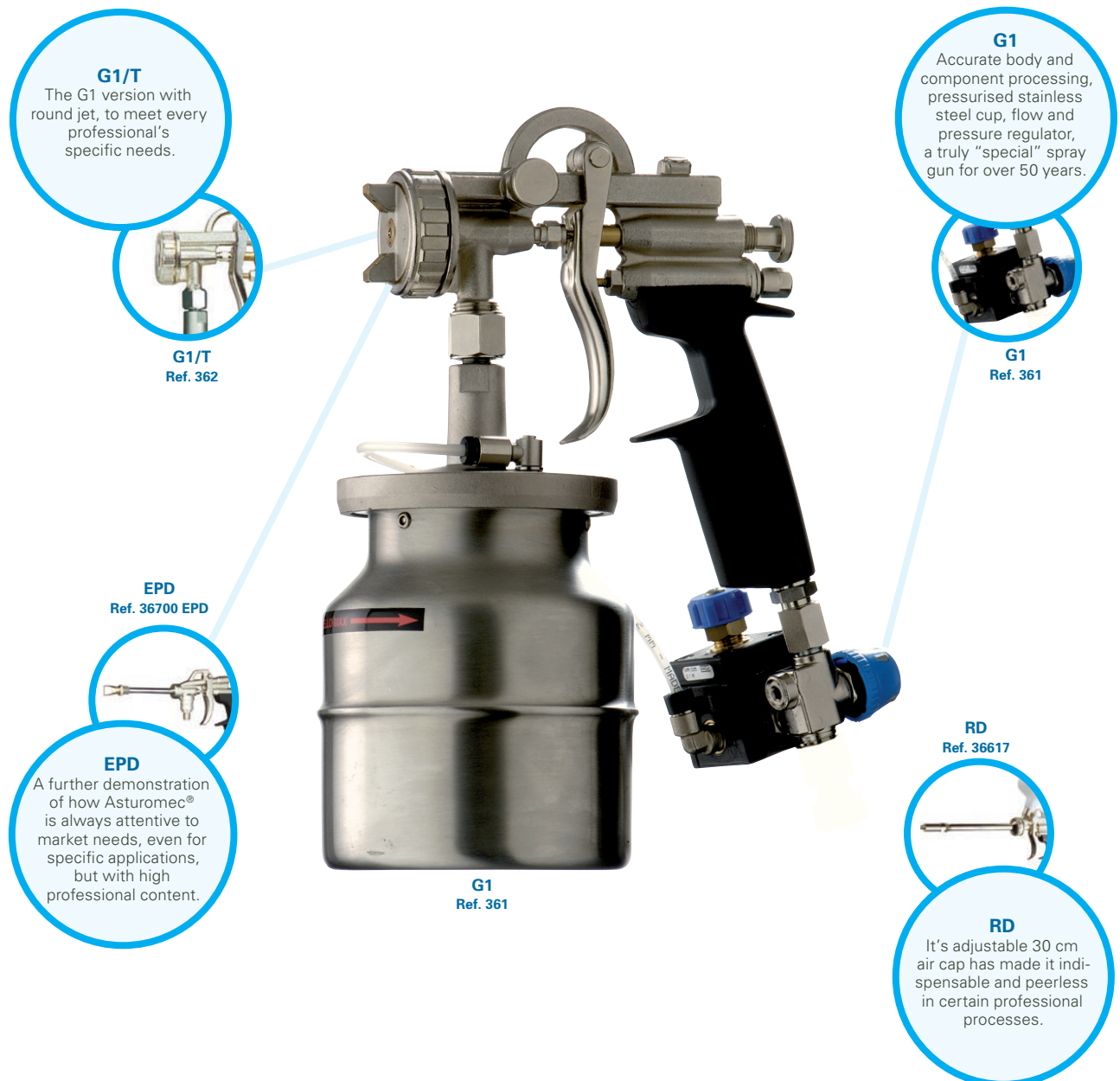
RD SERIES: Spray gun specific for the application of paint or rust-proofing products on hard to reach areas (such as radiators).

EPD SERIES: Pressurised air brush for dense products without atomisation air.

Ideal for glue, sealing and lubricants.

The special "flat or long spout" rods permit precise and efficient applications according to specific needs.

MM: Spray gun specific for plastic wall application.



G1

Ref. 361**

Adjustable suction pressure bayonet cup: 1000 cc stainless steel
 Body: nickel-plated sanded brass
 Air cap: nickel-plated brass
 Needle-nozzle-springs: stainless steel
 Adjustments: product-fan
 Cup gasket: o-ring in NBR
 Equipped with regulator group of the air inlet and air pressure to the cup
 Weight: 1.7 Kg

Operating air pressure: MAX 3.0 bar
 Air consumption: 370 l/min.
 Ø nozzle: 1.9 - 2.2 - 2.5



NOTE:
 add nozzle Ø to Ref. (**)

Recommended use:



G1/SP

Ref. 363**

To be used through pressurized containers, low pressure pumps - Product inlet M1/4"
 Body: nickel-plated sanded brass
 Air cap: nickel-plated brass
 Needle-nozzle-springs: stainless steel
 Adjustments: product-fan
 Weight: 620 g

Operating air pressure: MAX 3.0 bar
 Air consumption: 370 l/min.
 Ø nozzle: 1.9 - 2.2 - 2.5



NOTE:
 add nozzle Ø to Ref. (**)

Recommended use:



G1/T

Ref. 362**

Adjustable suction pressure bayonet cup: 1000 cc stainless steel
 Body: nickel-plated sanded brass
 Air cap: nickel-plated brass
 Needle-nozzle-springs: stainless steel
 Adjustments: product
 Cup gasket: o-ring in NBR
 Equipped with regulator group of the air inlet and air pressure to the cup
 Round spray
 Weight: 1.67 Kg

Operating air pressure: MAX 3.0 bar
 Air consumption: 230 l/min.
 Ø nozzle: 1.9 - 2.2 - 2.5



NOTE:
 add nozzle Ø to Ref. (**)

Recommended use:



G1/T SP

Ref. 364**

To be used through pressurized containers, low pressure pumps - Product inlet M1/4"
 Body: nickel-plated sanded brass
 Air cap: nickel-plated brass
 Needle-nozzle-springs: stainless steel
 Adjustments: product
 Round spray
 Weight: 620 g

Operating air pressure: MAX 3.0 bar
 Air consumption: 230 l/min.
 Ø nozzle: 1.9 - 2.2 - 2.5



NOTE:
 add nozzle Ø to Ref. (**)

Recommended use:



RD (with 680 cc nylon cup) - Ref. 36617

Body: nickel-plated sanded brass
 Air cap: nickel-plated brass, swivelling 360° for lateral spraying
 Needle-nozzle-springs: stainless steel
 Adjustments: product -fan
 Weight: 1.05 Kg

Operating air pressure: 3.0 - 4.0 bar
 Air consumption: 130 - 200 l/min.
 Ø nozzle: 1.7



Recommended use:



EPD Ref. 36700

Gun for pressurised dense products without atomization air.
 Ideal for glue, sealant and lubricants.
 Body: nickel-plated sanded brass
 Barrel: 100 mm with product blocking on the tip, equipped with interchangeable flat spout in metal
 Adjustments: product
 Weight: 370 g

Operating air pressure: product MAX 3 bar



Recommended use:



EPD/L Ref. 36800

Gun for pressurised dense products without atomization air.
 Ideal for glue, sealant and lubricants.
 Body: nickel-plated sanded brass
 Barrel: 150 mm, diam. int. 4 mm with product blocking at the tip of the barrel on the screwable nozzle
 Adjustments: product
 Weight: 345 g

Operating air pressure: product MAX 3 bar



Recommended use:



MM Ref. 62007

Cup: nylon 4.75 l
 Body: varnished aluminium
 Air cap: nickel-plated brass
 Needle-springs: brass
 Adjustments: product
 Use: application of plastic wall paint
 Weight: 1.36 Kg

Operating air pressure: 3.4 - 4.8 bar
 Air consumption: 120 l/min.
 Ø nozzle: 4.5 - 6.0 - 8.0



Recommended use:



main spray gun **SPARE PARTS**

Main Asturomec® original spare parts supplied in practical packaging to maintain parts most subject to wear. Complete range of suction and gravity cups, available in the materials and sizes best suited for every type of use.



CUPS
Complete range of POM C, aluminium, pressurised, upper and lower cups.

ADC KIT
Needle, nozzle and air cap, essential spare parts for correct spray gun operations.

The ADC KIT contains needle-nozzle-air cap for the following models:

10000

10011 HVLP 10010 HVLP 10010/SP HVLP 10011 HVLP HD	
REF.	Ø
*1135310	1.0
1135313	1.3
1135315	1.5
1135317	1.7
1135319	1.9
1135322	2.2

* only for "SP" model

10011 HTE 10010 HTE 10010/SP HTE 10011 HTE HD	
REF.	Ø
1135410	1.0
1135412	1.2
1135413	1.3
1135415	1.5
1135417	1.7
1135419	1.9
1135422	2.2
*1135425	2.5

* except for "SP" model

9000

9011 HVLP

REF.	Ø
43013	1.3
43015	1.5
43017	1.7
43019	1.9
43022	2.2
43025	2.5

**9010 HVLP
9010/SP HVLP**

REF.	Ø
*43110	1.0
*43113	1.3
43115	1.5
43117	1.7
43119	1.9
43122	2.2
43125	2.5

* only for "SP" model

9011 HTE

REF.	Ø
43213	1.3
*43215	1.5
43217	1.7
*43219	1.9
*43222	2.2
*43225	2.5

* for "HD" model too

**9010 HTE
9010/SP HTE**

REF.	Ø
*43310	1.0
43313	1.3
43315	1.5
43317	1.7
43319	1.9
43322	2.2
43325	2.5

* only for "SP" model

**9010 ECOMIX
9010/SP ECOMIX**

REF.	Ø
43422	2.2
43425	2.5
43430	3.0

9011 GEL COAT

REF.	Ø
43630	3.0
43640	4.0
43650	5.0

9010/SP GEL COAT

REF.	Ø
43730	3.0
43740	4.0
43750	5.0

9010/SP COLLA

REF.	Ø
43517	1.7
43519	1.9

6000

6011 HVLP

REF.	Ø
43912	1.2
43914	1.4
43917	1.7
43919	1.9
43922	2.2
43925	2.5
43930	3.0

**6010 HVLP
6010/SP HVLP**

REF.	Ø
43912	1.2
43914	1.4
43917	1.7
43919	1.9
43922	2.2
43925	2.5
43930	3.0

6011 HTE

REF.	Ø
44012	1.2
44014	1.4
44017	1.7
44019	1.9
44022	2.2
44025	2.5
44030	3.0

**6010 HTE
6010/SP HTE**

REF.	Ø
44012	1.2
44014	1.4
44017	1.7
44019	1.9
44022	2.2
44025	2.5
44030	3.0

**OM GREEN
IM GREEN
OM - IM**

OM GREEN

REF.	Ø
40114	1.4
40117	1.7
40119	1.9
40122	2.2

**IM GREEN
IM/SP GREEN**

REF.	Ø
40214	1.4
40217	1.7
40219	1.9
40222	2.2

OM

REF.	Ø
40160	1.0
40161	1.2
40162	1.4
40163	1.7
40164	1.9
40166	2.2
40167	2.5
40168	3.0
*40169	3.5
*40170	4.0

IM - IM/SP

REF.	Ø
40150	1.2
40151	1.4
40152	1.7
40153	1.9
40155	2.2
40156	2.5
40157	3.0

GRAPHIC SERIES

ES/RV

REF.	Ø
40351	0.5
40352	0.7
40353	1.0
40359	1.2

ES

REF.	Ø
*40350	0.3
40356	0.5
40357	0.7
40358	1.0

RE

REF.	Ø
*40410	0.3
40411	0.5
40412	0.7
40413	1.0
40414	1.2

GRAPHIQUE

REF.	Ø
40361	0.3

UR PLUS UR/S PLUS

UR/S PLUS UR PLUS/SP

REF.	Ø
40320	1.2
40321	1.4
40322	1.7
40323	1.8
40324	1.9
40326	2.2
40327	2.5
40328	3.0

UR PLUS

REF.	Ø
40310	1.2
40311	1.4
40312	1.7
40313	1.8
40314	1.9
40316	2.2
40317	2.5
40318	3.0

LOW PRESSURE SERIES

BP

REF.	Ø
40370	1.4

FLASH FLASH/M

REF.	Ø
40375	1.4
40376	1.4

SPECIAL SERIES

G1 - G1/SP

REF.	Ø
40380	1.9
40381	2.2
40382	2.5

G1/T G1/T SP

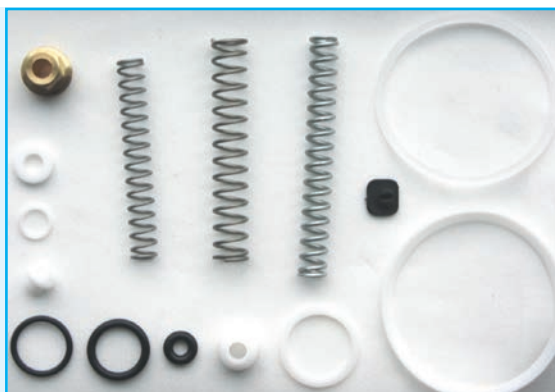
REF.	Ø
40385	1.9
40386	2.2
40387	2.5

RD

REF.	Ø
40395	1.7

Set of gaskets includes: springs, rod, air valve for spray guns

Model	REF.
10010/10011 all models	40761
9011 all models	40775
9010 all models	40770
6000 all models	40776
6010 SP all models	40777
OM - IM	40730
IM - SP	40732
UR/S PLUS- UR PLUS	40733
ES/RV	40715



Model	REF.
ES	40716
RE	40717
GRAPHIQUE	40720
RD	40730
BP	40750
FLASH	40751
G1-G1/T	40780
G1 SP - G1/T SP	40781

GRAVITY CUPS: Nylon and Aluminium (M 12x1)

NYL. 680 cc

Ref. 52010

680 cc nylon cup - weight: 215 g

Valid for models:

- 10011 (all models)**
- 9011 (all models)**
- 6011 (all models)**
- OM**
- RD**
- UR/S PLUS**



NYL. 250 cc

Ref. 52012

250 cc nylon cup - weight: 115 g

Valid for models:

- OM GREEN**
- OM**
- UR/S PLUS**



ALU. 750 cc

Ref. 52005

750 cc aluminium cup - weight: 170 g

Valid for models:

- 10011 (all models)**
- 9011 (all models)**
- 6011 (all models)**
- OM GREEN**
- OM**
- PRIMA**
- UR/S PLUS**



ALU. 500 cc

Ref. 52007

500 cc aluminium cup - weight: 116 g

Valid for models:

- 10011 (all models)**
- 9011 (all models)**
- 6011 (all models)**
- OM GREEN**
- OM**
- UR/S PLUS**



Cups mod. Graphique

20 cc glass suction cup - weight 30 g

Ref. 52039

4 cc anodized aluminium gravity cup - weight 10 g

Ref. 51040



GRAVITY CUPS: Nylon and Aluminium (M 8x0.75)

NYL. 250 cc

Ref. 52030

250 cc nylon cup - weight: 115 g

Valid for models:

- ES**
- ES/RV**
- RE**



NYL. 75 cc

Ref. 52032

75 cc nylon cup - weight: 54 g

Valid for models:

- ES**
- ES/RV**
- RE**



ALU. 125 cc

Ref. 52036

125 cc aluminium cup - weight: 170 g

Valid for models:

- ES**
- ES/RV**
- RE**



PRESSURIZED GRAVITY CUPS for high-density products

Pressurized gravity cup-9011 HD

680 cc nylon cup, complete with pressure regulator for spray gun inlet air, with pressure gauge.
For high density products such as latex, polyurethane, gel coat, tixotropics, etc.
Weight: 560 g

Ref. 52054

1000 cc aluminium cup, complete with pressure regulator for spray gun inlet air, with pressure gauge.
For high density products such as latex, polyurethane, gel coat, tixotropics, etc.
Weight: 560 g

Ref. 52053



CAMLOCK cups for suction spray guns

ALU. 1000 cc

1000 cc polished aluminium suction cup with cover
Weight: 370 g Ref. 51002

1000 cc polished aluminium suction cup only
Weight: 171 g Ref. 20100102083

Set of 5 pieces of gaskets for camlock cup Ref. 90119

Valid for models:

- 10010 HVLP**
- 10010 HTE**
- 9010 HVLP**
- 9010 HTE**
- 6010 HVLP**
- 6010 HTE**
- IM**
- UR PLUS**



BAYONET cups for suction spray guns

ALU. 1000 cc

1000 cc anodized aluminium suction cup with cover
Weight: 171 g Ref. 51009

1000 cc anodized aluminium suction cup only
Weight: 116 g Ref. 20100568183

Valid for models:

- 10010 HVLP**
- 9010 HVLP**
- 6010 HVLP**



ALU. 1000 cc

1000 cc polished aluminium suction cup with cover
Weight: 300 g Ref. 51020

1000 cc polished aluminium suction cup only
Weight: 116 g Ref. 20100568083

Set of 5 pieces of gaskets for camlock cup Ref. 90120

Valid for models:

- | | |
|------------------|----------------|
| 10010 HTE | IM |
| 9010 HTE | PRIMA |
| 6010 HTE | UR PLUS |



Stainless steel BAYONET cups

1000 cc stainless steel

1000 cc stainless steel suction cup with cover
 Weight: 650 g Ref. 51030

1000 cc stainless steel suction cup only
 Weight: 171 g Ref. 1011094

Set of 5 pieces of gaskets for stainless steel bayonet cup Ref. 90132

Valid for models:

9010 ECOMIX

G1

G1/T



SCREW CUPS

ALU. 1000 cc - FLASH Ref. 20101044084

1000 cc stainless steel suction cup only
 Weight: 196 g



ALU. 1000 cc - BP

1000 cc stainless steel suction cup only
 Weight: 124 g Ref. 20101044083

Set of 5 pieces of gaskets for screw cup Ref. 90126



painting ACCESSORIES

Professional accessories designed to facilitate bodyworks, guaranteeing maximum efficiency and practicality, demonstrating that even details are important in quality works. A complete ranges, from regulators to masks, clothing to Personal Protection Equipment, specific paint booth hoses and paint filters. All this designed and manufactured by Walmecc exclusively for professionals.

PAPER SIEVE

Practical, efficient, disposable sieve for correct paint filtering.

MASK

Complete with helmet, visor and internal air regulator; required for workman's safety in the paint booth.

GOGGLES

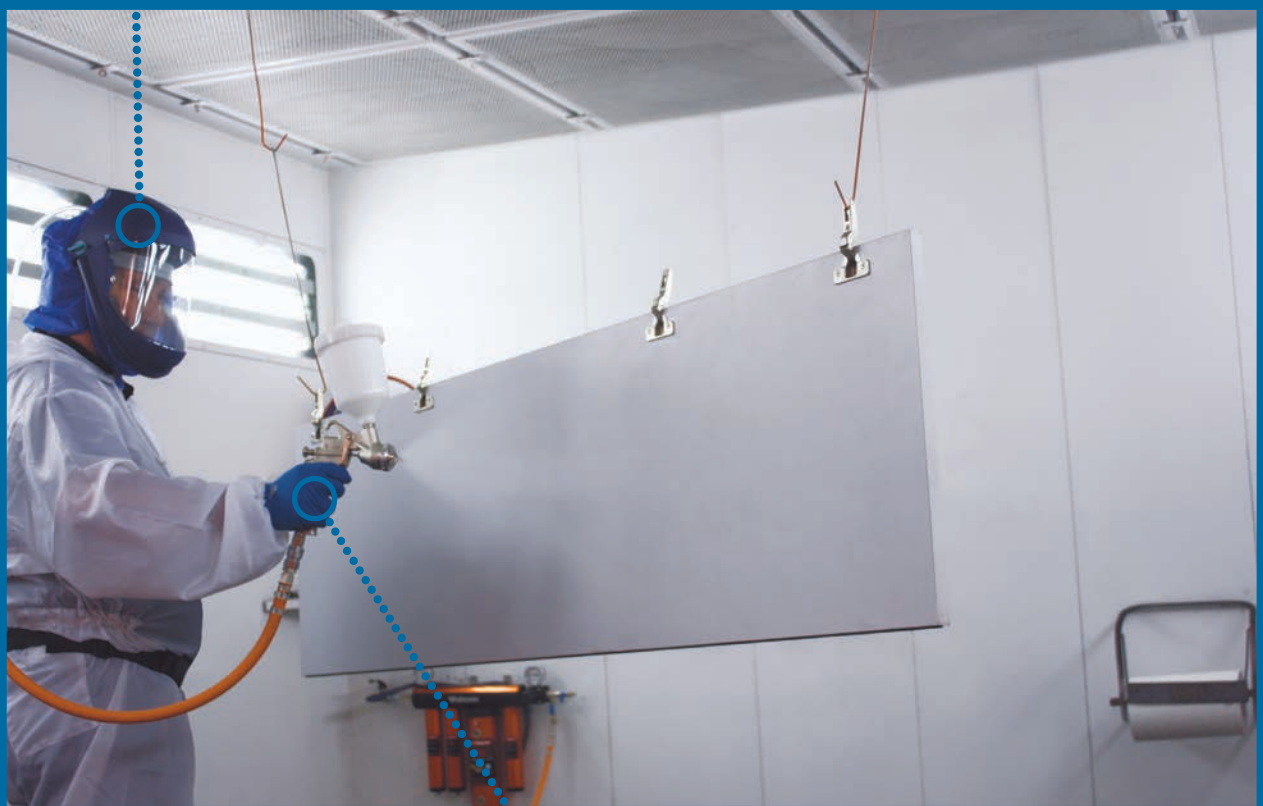
Light weight and ergonomic, they guarantee maximum safety during work.

MASKS

Active carbon or dust-proof, they offer suitable respiratory tract protection.

SKELETON

Spray gun bench stand with upper cup.



GLOVES

Made of latex, paint and solvent resistant, they let the operator work in fully clean conditions.

Regulator

Ref. 90105

Air flow regulator with glass pressure gauge and metallic case to be applied to the spray gun air inlet
 Pressure gauge: range 0 - 10 bar
 Air inlet: 1/4" U compatible with various standard 1/4"

Package: 1 pcs
 Weight: 150 g



Regulator

Ref. 90106

Air flow regulator to be applied to the spray gun air inlet
 Air inlet: 1/4" U compatible with various standard 1/4"

Package: 1 pcs
 Weight: 75 g



Gauge

Ref. 61306

Spare gauge for air flow regulator
 Connection: M 1/8"
 Diameter: 40 mm

Operating air pressure: 0 - 10 bar
 Package: 1 pcs
 Weight: 70 g



HELMET mask

Ref. 50400

Approved protective mask consisting of:
 - visored helmet with internal ventilation,
 - pressure drop safety buzzer,
 - polyurethane hose for spray gun connections,
 - filtering kit with carbon filters,
 - belt,
 - 2 spare adhesive visor cover,
 - CE0194 approved - EN1459N:2005 class A standard compliant

Package: 1 pcs
 Weight: 1,2 Kg



SAFETY PLUS mask

Ref. 50410

Protective mask with 2 active carbon filters
 - Meet EEC standards, 89/686/EEC directive
 Package: 1 pcs
 Weight: 320 g

Spare filter for Ref. 50410 - weight 100 g

Ref. 50411



SAFETY mask

Ref. 50416

Protective mask with 1 active carbon filter
 - Meet EEC standards, 89/686/EEC directive
 Package: 1 pcs
 Weight: 280 g

Spare filter for Ref. 50416 - weight 100 g

Ref. 50417



Paint mask

Ref. 50418

FFP2S active carbon filter face mask, suited for painting.

Package: 10 pcs
Weight: 260 g



Dust mask

Ref. 50419

FFP1 dust-proof filter face mask.

Package: 50 pcs
Weight: 160 g



Goggles

Ref. 50420

V-Maxx protective goggle mask with AC lenses + 2 lens covers

Package: 5 pcs
Weight: 375 g



Gloves

Ref. 50421

Latex, non-sterile ambidextrous paint gloves.
Paint and solvent resistant.

Package: 50 pcs
Weight: 2 Kg

One size fits all



Supporter

Ref. 60130/A

Magnetic holder for spray guns with gravity cups.
Can also be affixed to non-ferrous surfaces using supplied screws.
Features: painted steel

Package: 1 pcs
Dimensions cm: L 20 x P 14.5 x H 23.2 cm
Weight: 1.5 Kg



Skeleton

Ref. 60149

Holder for spray guns with gravity cups. Simple, stable and ergonomic,
suited for any spray gun.
Features: galvanised steel

Package: 1 pcs
Dimensions cm: L 13 x P 20 x H 29 cm
Weight: 390 g



Filter

Ref. 90111

Steam trap filter with filler component and steam release valve to be fitted at the inlet of the spray gun.

Package: 1 pcs
Weight: 100 g



Filter

100-mesh (750 µm) complete filter for pressure fed spray guns, **F/M 3/8"** version* Ref. 60097

100-mesh (750 µm) complete filter for pressure fed spray guns, **F/M 1/4"** version * Ref. 60098

100-mesh (750 µm) complete filter for Ref. 60097 ** Ref. 412012

* Package: 1 pcs
Weight: 50 g

** Package: 1 pcs
Weight: 25 g



Filter

Ref. 90112

2000-mesh (160 µm) stainless steel paint filter to be attached to the suction pipe of spray guns with suction cups.

Package: 10 pcs
Weight: 50 g



Filter

Ref. 90113**

Nylon paint filter to be attached to the suction pipe of spray guns with suction cups.

** Specify: 5000 - 7000 - 10000 mesh (90 µm-75 µm-60 µm)

Package: 10 pcs
Weight: 65 g



Filter

Ref. 90114/A

2000-mesh (160 µm) nylon paint filter to be attached to the spray gun with gravity cups for touch-ups

Package: 10 pcs
Weight: 40 g



Sieve

Ref. 90115**

Nylon sieve for paint

**Specify: 2000 - 5000 - 7000 - 10000 - 15000 - 17000 mesh (160 µm-90 µm-75 µm- 60 µm-45 µm-40 µm)

Package: 10 pcs
Weight: 300 g



Paper sieve

Disposable paper paint sieve.

1000 mesh version (190 µm)

Ref. 90146.10

2500 mesh version (125 µm)

Ref. 90146.25

Package: 250 pcs

Weight: 1.473 Kg



Viscosimeter

Ref. 90116

"FORD 4" viscosimeter cup to test paint viscosity.

Package: 3 pcs

Weight: 270 g



Gauge protector

from 39 to 43 mm

Ref. 90128/A

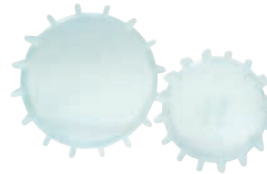
from 63 mm

Ref. 90129/A

Transparent shockproof and paint-proof pressure gauge guard, washable with solvent.

Package: 10 pcs

Weight: 10 g



Captest

Ref. 90124**

Captest for 9010-9011 HVLP spray guns. air cap with gauge attached so as to verify the effective air pressure at the air cap outlet.

Gauge: range 0 - 2.5 bar

Weight: 270 g

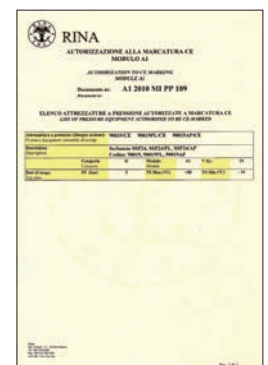
Ø nozzle: 1.0 - 1.3 - 1.5 - 1.7 - 1.9 - 2.2 - 2.5

Weight: 3 pcs



PRESSURIZED CONTAINERS and LOW PRESSURE PUMP

Ideal for the use of large amounts of product, suggested for wood industry, carpentry, industrial painting, for the application of vinyl and neoprene glues, tar, abrasive pastes and liquids.
Considering the dimensions the product can be poured directly into the tank or placed inside its own container to avoid cleaning. No special maintenance requirements.
A 30 l/min. low pressure pump has been added to the range in order to facilitate work on large surfaces, ideal for any type of use.



SSP 5

Ref. 90015

Container and fluid passages: stainless steel
 Product pressure regulator
 Coupling for 1 spray gun

Air outlet connection: M 1/4"
 Product outlet connection: M 1/4"
 Tank capacity: 9 l
 Weight: 4 Kg



Recommended use:



SSP 20

Ref. 90020

Container and fluid passages: stainless steel
 Product pressure regulator
 Coupling for 1 spray gun

Air outlet connection: M 1/4"
 Product outlet connection: M 1/4"
 Tank capacity: 18 l
 Weight: 4.5 Kg



Recommended use:



SSP 10

Ref. 90018

Internal removable tank: aluminium
 Safety valve and product pressure regulator
 Coupling for 1 spray gun
 Product pipe rapid washing system
 Cover: aluminium, surface treated with black cataphoresis, closure with 4 tie-rods
 Container: steel, treated with black cataphoresis
 Fittings and internal components: stainless steel

Air outlet connection: M 1/4"
 Product outlet connection: M 1/4"
 Tank capacity: 5.5 l
 Weight: 13.5 Kg



Recommended use:



SSP 10PL

Ref. 90018PL

Safety valve and product pressure regulator
 Coupling for 1 spray gun
 Material outlet at bottom of tank: for dense product
 Cover: aluminium, surface treated with black cataphoresis, closure with 4 tie-rods
 Container: steel, treated with black cataphoresis
 Fittings and internal components: stainless steel

Air outlet connection: M 1/4"
 Product outlet connection: M 1/4"
 Tank capacity: 10 l
 Weight: 14.5 Kg



Recommended use:



SSP 24

Ref. 90019

*Ref. 90019/CE

Internal removable tank: polyethylene
 Container: black cataphoresis, with reinforced top
 Safety valve and product pressure regulator
 Coupling for 2 spray guns
 Product pipe washing system
 Product stirrer: manual
 Cover: steel, surface treated with black cataphoresis, closure with 5 tie-rods supplied with seal toroidal gasket, complete with tap in zinc steel
 Fittings and internal components: stainless steel

Air outlet connection: M 1/4" - Product outlet connection: M 1/4"
 Tank capacity: 16 l
 Weight: 34 Kg *Optional: Meet EEC standards



Recommended use:



SSP 24 PL

Ref. 90019PL

*Ref. 90019/PL/CE

Container: black cataphoresis, with reinforced top
 Safety valve and product pressure regulator
 Coupling for 2 spray guns
 Product stirrer: manual
 Material outlet at bottom of tank: for dense product
 Cover: steel, surface treated with black cataphoresis, closure with 5 tie-rods supplied with seal toroidal gasket, complete with tap in zinc steel for adding product
 Fittings and internal components: stainless steel

Air outlet connection: M 1/4" - Product outlet connection: M 1/4"
 Tank capacity: 24 l
 Weight: 33 Kg *Optional: Meet EEC standards



Recommended use:



SSP 24 AP

Ref. 90019AP

*Ref. 90019/AP/CE

Internal removable tank: polyethylene
 Container: black cataphoresis, with reinforced top
 Safety valve and product pressure regulator
 Coupling for 2 spray guns
 Product pipe rapid washing system
 Product stirrer: pneumatic
 Cover: steel, surface treated with black cataphoresis, closure with 5 tie-rods supplied with seal toroidal gasket, complete with tap in zinc steel for adding product.

Air outlet connection: M 1/4" - Product outlet connection: M 1/4"
 Tank capacity: 16 l
 Weight: 38.5 Kg *Optional: Meet EEC standards



Recommended use:



WM 30

Ref. 90050

Low pressure pump equipped with DOUBLE DIAPHRAGM PRESSURE REGULATOR.
 For all kinds of paint, primers, colour and finishing

Operating air pressure: MAX 6 bar
 Air consumption: MAX 30 l/min
 Weight: 19 Kg



Recommended use:



Double hose

Black rubber hose for compressed air 6x14
Transparent Rilsan hose for product 8x10

7 m version - weight 1.6 Kg	Ref. 90032
10 m version - weight 2.3 Kg	Ref. 90035
14 m version - weight 3.2 Kg	Ref. 90034

Connection: F1/4" on product hose-bayonet on air hose
Package: 1 pcs



Double hose

Flexible bicolor hose in SBR/EPDM rubber
Blue hose for compressed air 6x13
Red hose for product 6x13

10 m version	Ref. 90036
7 m version	Ref. 90037

Air/product connection: F1/4"
Weight: 3.3 - 2.4 Kg
Package: 1 pcs



Aluminium tank

Ref. A008051

Internal aluminium tank for SSP 24 and SSP 24 AP

Package: 1 pcs
Weight: 1.3 Kg



Wheels

Ref. 90025

4 clamp kit wheels for SSP10 and SSP24

Package: 4 pcs
Weight: 1.95 Kg



BLOW GUNS

Designed and constructed for professional use, they are divided into 4 macro groups: PROFI series, PA/4N series, SOFT series and the new, captivating and modern PA/6 series.

Always functional and reliable, they now also meet the more demanding customer's needs with versions enhanced by the modern and innovative design.

The new PA/6 is a demonstration, combining functional quality with a unique design made possible by the grip's soft-touch rubber overprinting.

The wide range of available nozzles make Asturomec® blow guns flexible and suited for more specific use. The entire series is equipped with progressive distribution valve.

PROGRESSIVE VALVE

The distinguishing element in our blow guns, they accurately and reliably dose the amount of air to be used.



PA/6

Nickel-plated body with soft-touch rubber overprinting for a sure and comfortable grip. One of a kind, the PA/6 represents Asturomec's future.



PA/4NT Ref. 50071



PA/4NT

Innovative and captivating materials like the transparent nylon that identifies this full "vision" gun.



PA/6 Ref. 50065



PROFI

9 models available to meet the professional's specific needs. A gun that represents our brand and reliability.



PROFI

Ref. 50000

Professional blow gun.
 Finely adjustable progressive flow delivery valve with spring in stainless steel
 Air inlet: M 1/4" with swivel connection FF
 Body: hostaform C®
 Barrel: 150 mm curved

Operating air pressure: 1.0 - 6.0 bar
 Package: 6 pcs
 Weight: 845 g



Recommended use:



PROFI

Ref. 50001

Professional blow gun.
 Finely adjustable progressive flow delivery valve with spring in stainless steel
 Air inlet: M 1/4" with swivel connection FF
 Body: hostaform C®
 Barrel: 300 mm extra-long

Operating air pressure: 1.0 - 6.0 bar
 Package: 1 pcs
 Weight: 165 g



Recommended use:



PROFI

Ref. 50003

Professional blow gun with non-scratching rubber tip.
 Finely adjustable progressive flow delivery valve with spring in stainless steel
 Air inlet: M 1/4" with swivel connection FF
 Body: hostaform C®
 Barrel: 150 mm extra-long

Operating air pressure: 1.0 - 6.0 bar
 Package: 6 pcs
 Weight: 870 g



Recommended use:



PROFI

Ref. 50004

Professional blow gun.
 Finely adjustable progressive flow delivery valve with spring in stainless steel
 Air inlet: M 1/4" with swivel connection FF
 Body: hostaform C®
 Barrel: 1 m with flexible copper barrel

Operating air pressure: 1.0 - 6.0 bar
 Package: 1 pcs
 Weight: 270 g



Recommended use:



PROFI

Ref. 50005

Professional liquid atomising gun for washing, degreasing and lubricating with naphtha and diesel.

Finely adjustable progressive flow delivery valve with spring in stainless steel

Air inlet: M 1/4" with swivel connection FF

Body: hostaform C®

Hose: da 3 m

Operating air pressure: 1.0 - 6.0 bar

Package: 1 pcs

Weight: 295 g



Recommended use:



PROFI

Ref. 50006

Professional blow gun with silenced nozzle in compliance with CE standards.

Noise level inferior to 80 DbA

Finely adjustable progressive flow delivery valve with spring in stainless steel

Air inlet: M 1/4" with swivel connection FF

Body: hostaform C®

Barrel: 150 mm curved

Operating air pressure: 1.0 - 6.0 bar

Package: 6 pcs

Weight: 920 g



Recommended use:



PROFI

Ref. 50007

Professional blow gun with Venturi nozzle for increasing the outlet air volume.

Finely adjustable progressive flow delivery valve with spring in stainless steel

Air inlet: M 1/4" with swivel connection FF

Body: hostaform C®

Barrel: 150 mm curved

Operating air pressure: 1.0 - 6.0 bar

Package: 1 pcs

Weight: 155 g



Recommended use:



PROFI

Ref. 50008

Professional blow gun with anti-splintering safety nozzle.

Finely adjustable progressive flow delivery valve with spring in stainless steel

Air inlet: M 1/4" with swivel connection FF

Body: hostaform C®

Barrel: 150 mm curved

Operating air pressure: 1.0 - 6.0 bar

Package: 1 pcs

Weight: 160 g



Recommended use:



PROFI

Ref. 50009

Professional blow gun with safety nozzle in compliance with OSHA (USA) standards.

Finely adjustable progressive flow delivery valve with spring in stainless steel
Air inlet: M 1/4" with swivel connection FF

Body: hostaform C®

Barrel: 150 mm curved

Operating air pressure: 1.0 - 6.0 bar

Package: 1 pcs

Weight: 150 g



Recommended use:



PA/6

Ref. 50065

Blow gun with progressive flow delivery valve.

Body: polished and nickel-plated metal with soft-touch rubber overprinting
Nozzle: short

Operating air pressure: 1.0 - 6.0 bar

Package: 10 pcs

Weight: 2.38 Kg



Recommended use:



PA/6L - PA/6LL

Blow gun with progressive flow delivery valve.

Body: polished and nickel-plated metal with soft-touch rubber overprinting

Barrel: 150 mm straight - **PA/6L** version (*)

Ref. 50066

Barrel: 300 mm straight - **PA/6LL** version (**)

Ref. 50067

Operating air pressure: 1.0 - 6.0 bar

Package: 1 pcs

(*) weight: 254 g - (**) weight: 274 g



Recommended use:



PA/6CV

Ref. 50068

Blow gun with progressive flow delivery valve.

Body: polished and nickel-plated metal with soft-touch rubber overprinting
Nozzle: Venturi, for increasing the outlet air volume

Operating air pressure: 1.0 - 6.0 bar

Package: 1 pcs

Weight: 271 g



Recommended use:



PA/4N

Ref. 50047

Blow gun with progressive flow delivery valve.
 Body: nylon
 Nozzle: short

Operating air pressure: 1.0 - 6.0 bar
 Package: 10 pcs
 Weight: 1.9 Kg



Recommended use:



PA/4NL - PA/4NLL

Blow gun with progressive flow delivery valve
 Body: nylon

Barrel: 150 mm straight - **PA/4NL** version (*) Ref. 50048

Barrel: 300 mm straight - **PA/4NLL** version (**) Ref. 50049

Operating air pressure: 1.0 - 6.0 bar
 Package: 1 pcs
 (*) Weight: 200 g - (**) Weight: 225 g



Recommended use:



PA/4NP

Ref. 50050

Blow gun with specific needle for inflating balls
 Finely adjustable progressive flow delivery valve with spring in stainless steel
 Body: nylon

Operating air pressure: 1.0 - 6.0 bar
 Package: 5 pcs
 Weight: 1.9 Kg



PA/4NT

Ref. 50071

Blow gun with progressive flow delivery valve.
 Body: clear nylon
 Nozzle: short

Operating air pressure: 1.0 - 6.0 bar
 Package: 10 pcs
 Weight: 1.9 Kg



Recommended use:



PA/4NTL - PA/4NTLL

Blow gun with progressive flow delivery valve.
Body: clear nylon

Barrel: 150 mm straight - **PA/4NTL** version (*) Ref. 50072

Barrel: 300 mm straight - **PA/4NTLL** version (**) Ref. 50073

Operating air pressure: 1.0 - 6.0 bar
Package: 1 pcs
(*) Weight: 200 g - (**) Weight: 225 g



Recommended use:



PA/4N - PA/4NT: SICURA

Blow gun equipped with a progressive distribution valve with splinter-proof, scratchproof nozzle, EC standard muffled, OSHA safe (USA)
Body: in nylon/ clear nylon

nylon version **PA/4N SICURA** (*) Ref. 50046

clear nylon version **PA/4NT SICURA** (**) Ref. 50070

Operating air pressure: 1.0 - 6.0 bar
Package: 5 pcs
(*) Weight: 1.8 Kg - (**) Weight: 2.0 Kg



Recommended use:



SOFT

Ref. 50020

Extremely small blow gun (105 x 25 mm). equipped with progressive distribution valve.
Body: rubber
Fitting: F1/4"

Operating air pressure: 1.0 - 6.0 bar
Package: 1 pcs
Weight: 60 g



Recommended use:



SOFT

Ref. 50026

Extremely small blow gun (105 x 25 mm). equipped with progressive distribution valve.
Body: rubber
Fitting: M1/4" with 4 m polyurethane spiral air hose

Operating air pressure: 1.0 - 6.0 bar
Package: 1 pcs
Weight: 180 g



Recommended use:



SPECIAL NOZZLE

Ref. 90150

OSHA safety nozzle, spare part for PROFI ref. 50009.

Compatible with:

PROFI	ref. 50000
PROFI	ref. 50001
PA/6L	ref. 50066
PA/6LL	ref. 50067
PA/4NL	ref. 50048
PA/4NLL	ref. 50049
PA/4NTL	ref. 50072
PA/4NTLL	ref. 50073

Package: 5 pcs
Weight: 300 g



Recommended use:



SPECIAL NOZZLE

Ref. 90151

Anti-splintering nozzle, spare part for PROFI ref. 50008.

Compatible with:

PROFI	ref. 50000
PROFI	ref. 50001
PA/6L	ref. 50066
PA/6LL	ref. 50067
PA/4NL	ref. 50048
PA/4NLL	ref. 50049
PA/4NTL	ref. 50072
PA/4NTLL	ref. 50073

Package: 2 pcs
Weight: 90 g



Recommended use:



SPECIAL NOZZLE

Ref. 90152

VENTURI nozzle, spare part for PROFI ref. 50007.

Compatible with:

PROFI	ref. 50000
PROFI	ref. 50001
PA/6L	ref. 50066
PA/6LL	ref. 50067
PA/4NL	ref. 50048
PA/4NLL	ref. 50049
PA/4NTL	ref. 50072
PA/4NTLL	ref. 50073

Package: 5 pcs
Weight: 225 g



Recommended use:



SPECIAL NOZZLE

Ref. 90153

Silenced nozzle in compliance with EC standards, spare part for PROFI ref. 50006.

Compatible with:

PROFI	ref. 50000
PROFI	ref. 50001
PA/6L	ref. 50066
PA/6LL	ref. 50067
PA/4NL	ref. 50048
PA/4NLL	ref. 50049
PA/4NTL	ref. 50072
PA/4NTLL	ref. 50073

Package: 5 pcs
Weight: 375 g



SPECIAL NOZZLE

Ref. 90154

Atomiser nozzle and 3 m hose, spare part for PROFI ref. 50005.

Compatible with:

PROFI	ref. 50000
PROFI	ref. 50001
PA/6L	ref. 50066
PA/6LL	ref. 50067
PA/4NL	ref. 50048
PA/4NLL	ref. 50049
PA/4NTL	ref. 50072
PA/4NTLL	ref. 50073

Package: 1 pcs
Weight: 170 g



Recommended use:



SPECIAL NOZZLE

Ref. 90155

Non-scratch tip, spare part for PROFI ref. 50003.

Compatible with:

PROFI	ref. 50000
PROFI	ref. 50001
PA/6L	ref. 50066
PA/6LL	ref. 50067
PA/4NL	ref. 50048
PA/4NLL	ref. 50049
PA/4NTL	ref. 50072
PA/4NTLL	ref. 50073

Package: 5 pcs
Weight: 125 g



Recommended use:



SPECIAL NOZZLE

Ref. 901025

1 meter flexible copper barrel, spare part for PROFI ref. 50004.

Package: 1 pcs
Weight: 180 g



Recommended use:



INFLATING GUNS

Accurate and reliable, they have always been a measurement instrument selected and appreciated by the most demanding professionals and DIY lovers.

From the legendary PG/S to the brand new PG/PRO, the result of years of technical, functional and aesthetic research associated with decades of experience in this sector, the Asturomec® inflation gun range is the most complete and professional range on the market.

Precision instruments with top quality pressure gauges, equipped with FAIL SAFE GAUGE SAFETY VALVE that prevents gauge needle oscillations during use, cutting it off from the air line during inflation.

Available in the CEE/OM version, meeting EEC D96 18.08.02 nr. 71/316 directive standards for pressure gauges and gun (check First).



PG PRO CEE/OM

Ref. 50180/O

Professional inflating gun **EEC approved.**
 Pressure-gauge protecting safety valve
 Body: nickel-plated brass, Marfran C shockproof and nonslip grip
 Lever: single pressure load made of stainless steel
 Two-way release button: fast or regulation
 PVS pressure reading system
 Gauge: diam. 80 mm EEC approved-range 0-10 bar
 Length of tube: 1 m

Operating air pressure: 1.0 - 6.0 bar
 Package: 1 pcs
 Weight: 910 g



Recommended use:



PG/G PRO CEE/OM

Ref. 50181/O

Professional inflating gun **EEC approved, for twin or spoked wheels.**
 Pressure-gauge protecting safety valve
 Brass inflating head, 30 cm long
 Body: nickel-plated brass, Marfran C shockproof and nonslip grip
 Lever: single pressure load made of stainless steel
 Two-way release button: fast or regulation
 PVS pressure reading system
 Gauge: diam. 80 mm EEC approved-range 0-10 bar
 Length of tube: 1 m

Operating air pressure: 1.0 - 6.0 bar
 Package: 1 pcs
 Weight: 1.02 Kg



Recommended use:



PG PRO

Ref. 50182

Professional inflating gun.
 Pressure-gauge protecting safety valve
 Body: nickel-plated brass, Marfran C shockproof and nonslip grip
 Lever: single pressure load made of stainless steel
 Two-way release button: fast or regulation
 PVS pressure reading system
 Gauge: diam. 80 mm - range 0-10 bar
 Length of tube: 1 m

Operating air pressure: 1.0 - 6.0 bar
 Package: 1 pcs
 Weight: 800 g



PG/G PRO

Ref. 50183

Professional inflating gun, for twin or spoked wheels.
 Pressure-gauge protecting safety valve
 Brass inflating head, 30 cm long
 Body: nickel-plated brass, Marfran C shockproof and nonslip grip
 Lever: single pressure load made of stainless steel
 Two-way release button: fast or regulation
 PVS pressure reading system
 Gauge: diam. 80 mm - range 0-10 bar
 Length of tube: 1 m

Operating air pressure: 1.0 - 6.0 bar
 Package: 1 pcs
 Weight: 930 g



Recommended use:



PG/S CEE/OM

Ref. 50108/O

Inflating gun **EEC approved.**
 Pressure-gauge protecting safety valve
 Body: nylon
 Lever: single operation with double acting pressing filling and release lever
 Gauge: diam 63 mm EEC approved-range 0-10 bar
 Length of tube: 80 cm

Operating air pressure: 1.0 - 6.0 bar
 Package: 1 pcs
 Weight: 460 g



Recommended use:



PG/SG CEE/OM

Ref. 50109/O

Inflating gun **EEC approved, for twin or spoked wheels.**
 Pressure-gauge protecting safety valve
 Brass inflating head, 30 cm long
 Body: nylon
 Lever: single operation with double acting pressure filling and release lever
 Gauge: diam 63 mm EEC approved-range 0-10 bar
 Length of tube: 80 cm

Operating air pressure: 1.0 - 6.0 bar
 Package: 1 pcs
 Weight: 590 g



PG/S

Ref. 50106

Inflating gun.
 Pressure-gauge protecting safety valve
 Body: nylon
 Lever: single operation with double acting pressure filling and release lever
 Gauge: diam. 63 mm double range bar/psi
 Length of tube: 80 cm

Operating air pressure: 1.0 - 6.0 bar
 Package: 1 pcs
 Weight: 440 g



Recommended use:



PG/SG

Ref. 50107

Inflating gun, for twin or spoked wheels.
 Pressure-gauge protecting safety valve
 Brass inflating head, 30 cm long
 Body: nylon
 Lever: single operation with double acting pressure filling and release lever
 Gauge: diam. 63 mm double range bar/psi
 Length of tube: 80 cm

Operating air pressure: 1.0 - 6.0 bar
 Package: 1 pcs
 Weight: 570 g



Recommended use:



CP

Pressure gauge for checking pressure - double range bar/psi Ref. 50120

Pressure gauge for checking pressure - single range bar Ref. 50120/BAR

Gauge: diameter 63 mm
 Package: 1 pcs
 Weight: 260 g



Recommended use:



INFLATING HEAD

Polyamide + fibreglass version - diam. 6 mm - weight 560 g Ref. 50121

Polyamide + fibreglass version - diam. 8 mm - weight 560 g Ref. 50134

Turned brass version - diam. 6 mm - weight 660 g Ref. 50127

Turned brass version - diam. 8 mm - weight 660 g Ref. 50128

Inflating head with PRESTA valve, PRESTA HIGH, PRESTA HIGH PLUS - use: for racing bicycles - weight 685 g Ref. 50132

Package: 25 pcs



Recommended use:



INFLATING HEAD

Special GEM brass inflation head for paired or spoke wheels, compatible with hose diam. 6/8 mm

300 mm long version - complete with grip (*) Ref. 50123

200 mm long version (**) Ref. 50122

Package: 3 pcs
 (*) Weight: 460 g - (**) Weight: 290 g



Recommended use:



INFLATING KIT

Ref. 50125

Inflation kit made up of 3 pcs.
 Material: brass/steel
 Use: bicycles, rafts, balls

Package: 1 pcs
 Weight: 40 g



Recommended use:



WASHING GUNS

Guns designed specifically for washing, lubrication, degreasing, spraying, disinfecting and decontaminating in multiple sectors: from workshops to industry, from construction and beatyards to agriculture, garages, bodyshops and D.I.Y.



N4/S SUPER

Ref. 50171

Professional cleaning gun suited for any type of use, the air flow can be locked at a set quantity.

Bayonet suction cup: aluminium 1000 cc
 Body: aluminium
 Adjustable liquid atomising nozzle: nickel-plated brass
 Barrel: nickel-plated brass - 300 mm long
 Filler opening: diam 8.5 cm

Operating air pressure: 2.0 - 8.0 bar
 Package: 1 pcs
 Weight: 1.08 Kg



Recommended use:



N4/S

Ref. 50172

Professional washing gun suitable for every use.

Bayonet suction cup: aluminium 1000 cc
 Body: aluminium
 Adjustable liquid atomising nozzle: nickel-plated brass
 Barrel: nickel-plated brass - 200 mm long
 Filler opening: diam 8.5 cm

Operating air pressure: 2.0 - 8.0 bar
 Package: 1 pcs
 Weight: 1 Kg



Recommended use:



N4

Ref. 50173

Professional washing gun suitable for every use.

Bayonet cup with screw closure: 1000 cc aluminium
 Body: aluminium
 Adjustable liquid atomising nozzle: nickel-plated brass
 Barrel: nickel-plated brass - 200 mm long
 Filler opening: diam 8.5 cm

Operating air pressure: 2.0 - 8.0 bar
 Package: 2 pcs
 Weight: 1.51 Kg



Recommended use:



LA

Ref. 50165

Gun for mixing liquid with compressed air.

Body: nickel-plated brass
 Water fitting: push-on for 12 mm internal Ø hose to be tightened with a strap
 Adjustment of liquid flow using ball valve

Operating air pressure: 4.0 - 8.0 bar
 Package: 1 pcs
 Weight: 950 g



Recommended use:



HYDROJET

Ref. 50160

Liquid mixing gun with compressed air, equipped with 2 independent valves to dose air and liquid and progressive opening lever for flow regulation.

Body: hostaform C®
 Water fitting: push-on for 12 mm internal Ø hose to be tightened with a strap - M1/4"

Operating air pressure: 1.0 - 6.0 bar
 Package: 1 pcs
 Weight: 440 g



Recommended use:



SANDBLASTING GUNS

Ideal for all tasks which involve cleaning, scraping, removing rust, paint, mold or stubborn dirt, preparing materials such as wood, steel, aluminium, plastic, etc...
Used in numerous sectors: bodyshops, industry and carpentry.



PS

Ref. 50210

Sandblasting gun suitable for work on large surfaces.
 Body: nickel-plated sanded brass
 Nozzle: cemented casehardened steel Ø 6 mm
 Immersed hoses: 2 m hose - diameter 16x22

Operating air pressure: 5.0 - 8.0 bar
 Package: 1 pcs
 Weight: 1.75 Kg



Recommended use:



PS/S

Ref. 50212

Sandblasting gun suitable for work on large surfaces.
 Bayonet suction cup: aluminium 1000 cc
 Body: nickel-plated sanded brass
 Nozzle: cemented casehardened steel Ø 6 mm

Operating air pressure: 5.0 - 8.0 bar
 Package: 1 pcs
 Weight: 1.15 Kg



Recommended use:



PS/I

Ref. 50314

Sandblasting gun suitable for work on medium surfaces.
 Body: polished and nickel-plated metal with soft-touch rubber overprinting
 Nozzle: cemented casehasrdened steel Ø 6 mm with sand flow rate adjustment
 Immersed hoses: 3 m hose - diameter 8x13

Operating air pressure: 5.0 - 8.0 bar
 Package: 1 pcs
 Weight: 940 g



Recommended use:



PS/IS

Ref. 50316

Sandblasting gun suitable for work on medium surfaces.
 Bayonet suction cup: aluminium 1000 cc
 Body: polished and nickel-plated metal with soft-touch rubber overprinting
 Nozzle: cemented casehasrdened steel Ø 6 mm with sand flow rate adjustment

Operating air pressure: 5.0 - 8.0 bar
 Package: 1 pcs
 Weight: 920 g



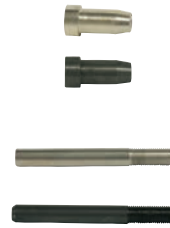
Recommended use:



NOZZLE

6 mm external Ø nozzle for PS and PS/S (*) cemented and tempered steel version	Ref. 20201644094
6 mm external Ø nozzle for PS and PS/S (*) tungsten carbide version	Ref. 20201644294
Ø 6 mm sand output nozzle for PS/I and PS/IS (**) cemented and tempered steel version	Ref. 20201682494
Ø 6 mm sand output nozzle for PS/I and PS/IS (**) tungsten carbide version	Ref. 20201682294

Package: 1 pcs
 (*) Weight: 105 g - (**) Weight: 75 g



Recommended use:



SUPERMISTRAL

Ref. 50300

Sandblasting gun suitable for work on small surfaces and fitted with automatic sand recovery system, possibility to adjust the vacuum power.
 Bayonet suction cup: aluminium 1000 cc
 Body: polished and nickel-plated metal with soft-touch rubber overprinting
 Featuring: 4 rubber nozzle kit
 1 abrasive sand box of 700 g

Operating air pressure: 5.0 - 8.0 bar
 Package: 1 pcs
 Weight: 2.4 Kg



Recommended use:



MISTRAL

Ref. 50301

Sandblasting gun suitable for work on small surfaces and fitted with automatic sand recovery system.
 Bayonet suction cup: aluminium 1000 cc
 Body: polished and nickel-plated metal with soft-touch rubber overprinting
 Featuring: 1 abrasive sand box of 700 g

Operating air pressure: 5.0 - 8.0 bar
 Package: 1 pcs
 Weight: 2.2 Kg



Recommended use:



NOZZLE KIT

Ref. 50205

4 rubber nozzle kit for SUPERMISTRAL ref. 50300, shaped to adhere to internal and external angular surfaces of various shapes.
 Compatible with: MISTRAL ref. 50301

Package: 1 kit
 Weight: 140 g



Recommended use:



ABRASIVE SAND

25 Kg abrasive sand package - bags - 1 pcs	Ref. 50228
700 g abrasive sand package - jar - 5 pcs.	Ref. 50226



GUNS FOR PROTECTIVE and SEALANT COMPOUNDS

Spray guns conceived to apply loose spray sealants, soundproofing products and car underbody protective products in general; prepackaged cartridge or bagged silicon; plaster and putty, also suited for construction or industrial use. Featuring low air consumption that permits its use in various sectors, the range has been redesigned over the years to meet the various market needs with the addition of new versions (TS/N – PSP) and improving others (IM BODY regulator, PB-PB/S body).



IM BODY

Ref. 50242

Gun for protective soundproofing applications for under body, single components and protective wax, equipped with flow regulator and inlet air flow regulator.

Body: nickel-plated sanded brass

Nozzle: 1 short nozzle with fan-3 different types of atomising nozzles with 90 cm extensions

Tank: in anodised aluminium with internal thread cartridge holder and aluminium suction tube

Operating air pressure: 5.0 - 8.0 bar

Cup's capacity: 1 lt

Package: 1 pcs

Weight: 2.1 Kg



Recommended use:



PB/S

Ref. 50254

Gun for applying mastic, fillers and silicone products in bags equipped with 3 different shaped nickel-plated brass nozzles.

Body: in polypropylene

Tank: in aluminium with automatic pressure release

Operating air pressure: 2.0 - 5.0 bar Bags: L 34 cm,

Package: 1 pcs

Weight: 1.4 Kg

diam. min Ø 40

diam. max Ø 50



Recommended use:



PB

Ref. 50253

Gun for applying mastics, fillers and silicone products in cartridges.

Body: in polypropylene

Tank: in aluminium with automatic pressure release

Operating air pressure: 2.0 - 5.0 bar Cartridge: L 22.5 cm,

Package: 1 pcs

Weight: 1.02 Kg

diam. min Ø 40

diam. max Ø 50



Recommended use:



AR

Ref. 50243

Gun for applying single component and two component soundproofing protective compounds, premixed including polyurethane-based compounds or loose.

Bayonet suction cup: aluminium 1000 cc

Body: polished and nickel-plated metal with soft-touch rubber overprinting

Operating air pressure: 2.0 - 5.0 bar

Package: 1 pcs

Weight: 865 g



Recommended use:



TS

Gun for applying single component soundproofing protective compounds including polyurethane-based compounds and protective waxes in pre-packed 1 lt tins. Body: polished and nickel-plated metal with soft-touch rubber overprinting

Featuring: 60 cm long extension tube with special nozzle for spraying in box

Connector:

with European thread	(Ref. 50244)
with USA thread	(Ref. 50245)
with Southamerican thread	(Ref. 50244AM)

Operating air pressure: 2.0 - 5.0 bar
Package: 1 pcs
Weight: 540 g



Recommended use:



TS/N

Gun for applying single component soundproofing protective compounds pre-mixed including polyurethane-based compounds or loose.

Body: nylon
Featuring: 60 cm. long extension tube with special nozzle for spraying in box sections

Nozzle: interior in steel-external in hostaform C®

Connector:

with European thread	(Ref. 50247)
with USA thread	(Ref. 50247 USA)
with Southamerican thread	(Ref. 50247 AM)

Operating air pressure: 2.0 - 5.0 bar
Package: 1 pcs
Weight: 290 g



Recommended use:



NOZZLE

Ref. 0920901

Hostaform C® connection with adjustable nozzle. Spare part for TS/N

Package: 1 pcs
Weight: 30 g



Recommended use:



PSP

Ref. 50246

Gun for the applicatoin of polyurethane foam

Body: nickel-plated brass
Adapter: universal type for cylinder
Barrel: 300 mm

Package: 1 pcs
Weight: 368 g



Recommended use:



GREASE GUNS

Designed for the high pressure greasing of joints, bearings and gears in general, for the motor vehicle repair sector and for internal machine tool mechanisms in the industrial sector.



GR/1

Ref. 50270

High pressure grease gun for loose products.
 Body: sanded aluminium
 Delivery: 600 bar
 Featuring: special 4-claw "ZERK" head;
 "THE CALAMIT" head;
 high pressure tube included.

Operating air pressure: 4.0 - 5.0 bar
 Package: 1 pcs
 Weight: 3.2 Kg



Recommended use:



GR/C

Ref. 50271

High pressure grease gun for products in 600 cc cartridge
 Body: sanded aluminium
 Delivery: 600 bar
 Featuring: special 4-claw "ZERK" head; Cartridge: 600 cc
 "THE CALAMIT" head; diam. Ø 56
 high pressure tube included.

Operating air pressure: 4.0 - 5.0 bar
 Package: 1 pcs
 Weight: 3.1 Kg



Recommended use:



GR/E

Ref. 62006/B

High pressure grease gun for products in cartridge.
 Body: polished aluminium
 High pressure hose Cartridge: 400 cc
 diam. Ø 53

Operating air pressure: 2.0 - 10 bar
 Package: 1 pcs
 Weight: 1.5 Kg



Recommended use:



HEAD

Ref. 50274

Special 4-claw "ZERK" head.
 Package: 3 pcs
 Weight: 110 g



HEAD

Ref. 50276

"THE CALAMIT" head.
 Package: 3 pcs
 Weight: 120 g



HOSE

Ref. 50280

Rubber high pressure hose (max 900 bar) to 40 cm
 Thread: 10x1 mm
 Package: 1 pcs
 Weight: 120 g



VACUUM CLEANER

Multifunctional product particularly suitable for cleaning inside motor vehicles and therefore ideal for garages, bodyshops and D.I.Y. Compact dimensions, light weight and easy to handle.



EOLO
Ref. 50150

EOLO

Ref. 50150

Vacuum gun for car interior cleaning. Includes a large nozzle and vacuum rod.
Can also be used as a blow gun by removing the hose and bag.

Body: sanded aluminium
Hose length: 50 cm
Zipped dust bag

Operating air pressure: 4.0 - 8.0 bar
Package: 1 pcs
Weight: 530 g



Recommended use:



EOLO KIT

Ref. 50155

Accessory Kit for EOLO.

Composing:

- 1 wide tool
- 1 suction lance

Operating air pressure: 4.0 - 8.0 bar
Package: 1 pcs
Weight: 80 g



Recommended use:



PNEUMATIC TOOLS

A range that includes the most common pneumatic tools on the market.

Sturdy and reliable, they can be used by DIY and professional with an extremely attractive quality/price ratio. The metallic blue finish sets them apart from "similar" retail articles.

In order to meet the needs of the various customer types, the product has been packaged in two different ways: blister for supermarket and display sales; hard suitcase case for professionals.



MI

Ref. 62000

Air impact wrench 1/2"
Body: polished aluminium
Fitting: 1/4"
Max torque: 340 Nm
Speed: 7000 rpm
Featuring: D connection

Operating air pressure: 6.2 bar
Package: 1 pcs
Weight: 2.3 Kg



Recommended use:



MK

Ref. 62005

Pneumatic ratchet wrench 1/2"
Body: polished aluminium
Fitting: 1/4"
Square drive: 1/2"
Speed: 150 rpm
Featuring: D connection

Operating air pressure: 6.2 bar
Package: 1 pcs
Weight: 1.27 Kg



Recommended use:



MS

Ref. 62002

Air hammer
Body: polished aluminium
Fitting: 1/4"
Blows/min: 3500 - 5000
Featuring: D connection; 4 tips + springs set

Operating air pressure: 6.2 bar
Package: 1 pcs
Weight: 1.6 Kg



Recommended use:



MT

Ref. 62004

Reversible air drill 3/8"
Body: polished aluminium
Fitting: 1/4"
Speed: 1800 rpm
Featuring: D connection plus wrench

Operating air pressure: 6.2 bar
Package: 1 pcs
Weight: 1.02 Kg



Recommended use:



SET OF 4 TIPS + SPRINGS Ref. 62003/B

Steel tips for air hammer

Package: 1 pcs
Weight: 520 Kg

**SET OF 10 HEXAGONAL SLEEVES 1/2"** Ref. 62001/B

Steel sleeves for air impact wrench
Sizes: 10 - 11- 13- 14 - 17 - 19 - 21 - 22 - 24 - 27

Package: 1 pcs
Weight: 1.45 Kg

**BOTTLE OF OIL** Ref. 62008/B

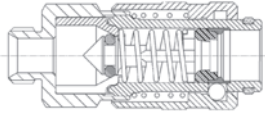
For a correct usage of the pneumatic tools

Package: 1 pcs
Weight: 132 g



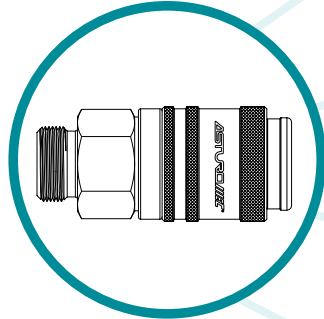
COUPLINGS and PLUGS

X300 U



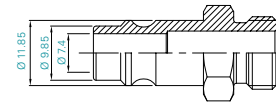
X300 U
universal automatic coupling

Body: nickel-plated brass/aluminium
Tip: PA66 loaded glass with aluminium ring
Air valve: brass
Lock: 6-ball steel
Gaskets: NBR

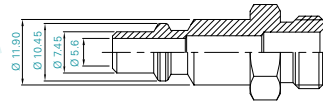


COMPATIBLE PLUGS

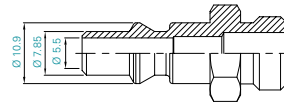
STANDARD



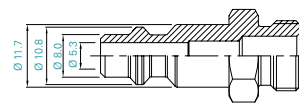
D



I

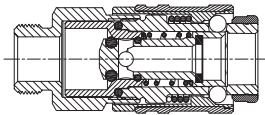


S



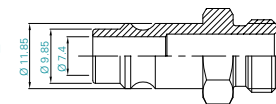
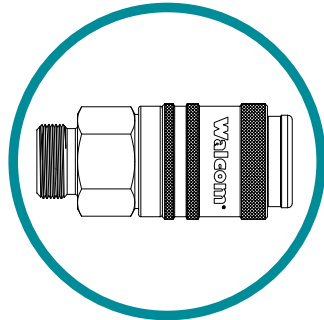
USA

X300



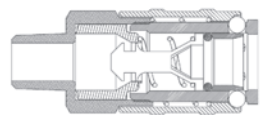
X300
automatic coupling

Body: nickel-plated brass/anodised aluminium
Tip: PA66 loaded glass with aluminium ring
Air valve: brass
Lock: 6-ball steel
Gaskets: NBR



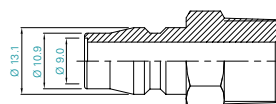
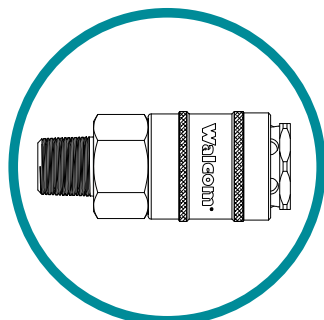
D

X400 AUT



X400
semi-automatic coupling

Body: nickel-plated brass/tempered and chrome-plated steel
Tip: nickel-plated brass
Air valve: tropicalized steel
Lock: 4-ball steel
Gaskets: NBR



Jp

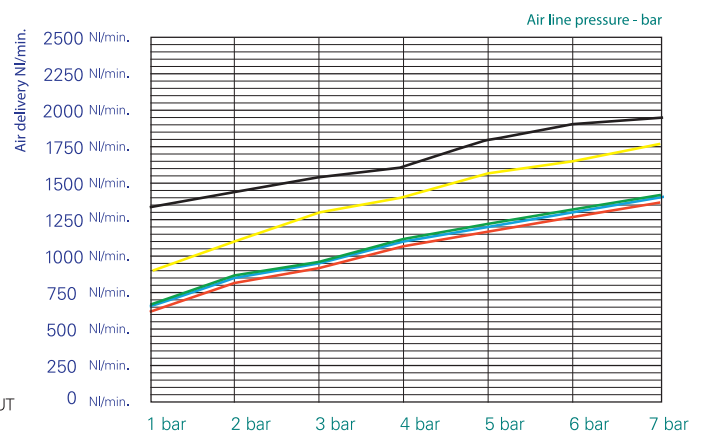
TECHNICAL SPECIFICATIONS:

Professional coupling and plugs and high air flow fittings for bodywork use.
Japanese (diam. 9.2 mm) and German (diam. 7.4 mm) standards guarantee constant air flow between hose and spray gun, without choking, and air flow over 1.500 l/min at 6 bar.

Operating air pressure: 0 - 16 bar
Working temperature: -40°C + 80°C

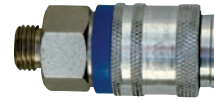
- Standard D
- Standard I
- Standard S
- Standard USA
- Standard X400 AUT

QUICK COUPLING FLOW DIAGRAM WITH 1 bar



X300 U - Male

Thread 1/4"	Ref. 10201U
Thread 3/8"	Ref. 10202U
Thread 1/2"	Ref. 10203U
Package: 25 pcs	



X300 U - Female

Thread 1/4"	Ref. 10211U
Thread 3/8"	Ref. 10212U
Thread 1/2"	Ref. 10213U
Package: 25 pcs	



X300 U - With rest

Internal diameter 6 mm	Ref. 10221U
Internal diameter 8 mm	Ref. 10222U
Internal diameter 10 mm	Ref. 10223U
Package: 25 pcs	



X300 U - For rubber hose

Internal diameter 6 mm - External diameter 14 mm	Ref. 10231U
Internal diameter 8 mm - External diameter 17 mm	Ref. 10232U
Internal diameter 10 mm - External diameter 19 mm	Ref. 10233U
Internal diameter 8 mm - External diameter 14 mm	Ref. 10234U
Package: 25 pcs	



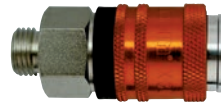
X300 U - For nylon hose with spring

Thread 6x8	Ref. 10241U
Thread 8x10	Ref. 10242U
Thread 6x10	Ref. 10243U
Thread 8x12	Ref. 10244U
Thread 10x12	Ref. 10246U
Package: 25 pcs	



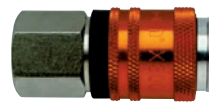
X300 - Male

Thread 1/4"	Ref. 10251
Thread 3/8"	Ref. 10252
Thread 1/2"	Ref. 10253
Package: 10 pcs	



X300 - Female

Thread 1/4"	Ref. 10261
Thread 3/8"	Ref. 10262
Thread 1/2"	Ref. 10263
Package: 10 pcs	



X300 - With rest

Internal diameter 6 mm	Ref. 10271
Internal diameter 8 mm	Ref. 10272
Internal diameter 10 mm	Ref. 10273
Package: 10 pcs	



X300 - For rubber hose

Internal diameter 6 mm - External diameter 14 mm	Ref. 10281
Internal diameter 8 mm - External diameter 14 mm	Ref. 10282
Internal diameter 8 mm - External diameter 17 mm	Ref. 10283
Internal diameter 10 mm - External diameter 19 mm	Ref. 10284
Package: 10 pcs	



X300 - For nylon hose with spring

Thread 6x8	Ref. 10291
Thread 8x10	Ref. 10292
Thread 6x10	Ref. 10293
Thread 8x12	Ref. 10294
Thread 10x12	Ref. 10295
Package: 10 pcs	



X400 - Male

Thread 1/4"U Ref. 10551

Thread 3/8"U Ref. 10552

Package: 10 pcs



X400 - Female

Thread 1/4"U Ref. 10651

Thread 3/8"U Ref. 10652

Package: 10 pcs



X400 - With rest

Internal diameter 8 mm Ref. 10555

Internal diameter 10 mm Ref. 10556

Package: 10 pcs



X400 - Jp male plug

Thread 1/4"U Ref. 11470

Thread 3/8"U Ref. 11471

Package: 10 pcs



X400 - Jp female plug

Thread 1/4"U Ref. 11480

Thread 3/8"U Ref. 11481

Package: 10 pcs



X100 S

Male

Ref. I	Thread	Ref. S	Thread	Ref. USA	Thread	Ref. GB	Thread
10501/S	1/4"	10511/S	1/4"	10521/S	1/4"	10531/S	1/4"
10502/S	3/8"	10512/S	3/8"	10522/S	3/8"	10532/S	3/8"
10503/S	1/2"	10513/S	1/2"	10523/S	1/2"	/	/



Package: 25 pcs

Female

Ref. I	Thread	Ref. S	Thread	Ref. USA	Thread	Ref. GB	Thread
10601/S	1/4"	10611/S	1/4"	10621/S	1/4"	10631/S	1/4"
10602/S	3/8"	10612/S	3/8"	10622/S	3/8"	10632/S	3/8"



Package: 25 pcs

For rubber hose

Ref. I	Øint.-Øext.	Ref. S	Øint.-Øext.	Ref. USA	Øint.-Øext.	Ref. GB	Øint.-Øext.
10703/S	6x14	/	/	/	/	/	/
10710/S	8x14	/	/	/	/	/	/
10707/S	8x17	/	/	/	/	/	/
10709/S	10x19	/	/	/	/	/	/



Package: 25 pcs

For nylon hose with spring

Ref. I	Øint.-Øext.	Ref. S	Øint.-Øext.	Ref. USA	Øint.-Øext.	Ref. GB	Øint.-Øext.
10801/S	6x8	10811/S	6x8	/	/	/	/
10802/S	8x10	10812/S	8x10	10822/S	8x10	/	/
10803/S	8x12	/	/	/	/	/	/



Package: 25 pcs

With rest


Ref. I	Øint.	Ref. S	Øint.-Øext.	Ref. USA	Øint.-Øext.	Ref. GB	Øint.-Øext.
/	/	10731/S	6	10741/S	6	10750/S	6
/	/	10733/S	8	10743/S	8	10751/S	8
/	/	/	/	10744/S	9	10752/S	9
/	/	10735/S	10	10745/S	10	/	/
/	/	/	/	10748/S	13	/	/




Package: 25 pcs

X90


Couplings

Ref.	Thread	MALE 
10400	1/8"	
10401	1/4"	

Package: 25 pcs


Ref.	Thread	FEMALE 
10410	1/8"	
10411	1/4"	

Package: 25 pcs


Ref.	Ø int.	WITH REST 
10420	6	
10421	8	

Package: 25 pcs


Plugs

Ref.	Thread	MALE 
11400	1/8"	
11401	1/4"	

Package: 25 pcs

Ref.	Thread	FEMALE 
11410	1/8"	
11411	1/4"	

Package: 25 pcs

Ref.	Ø int.	WITH REST 
11420	6	

Package: 25 pcs

STEEL PLUGS FOR X100 S and X300 U

Male

Ref. I	Thread	Ref. S	Thread	Ref. USA	Thread	Ref. GB	Thread
11001	1/4"	11011	1/4"	11021	1/4"	11031	1/4"
11002	3/8"	11012	3/8"	11022	3/8"	/	/
11003	1/2"	11013	1/2"	11023	1/2"	/	/



Package: 25 pcs

Female

Ref. I	Thread	Ref. S	Thread	Ref. USA	Thread	Ref. GB	Thread
11101	1/4"	11111	1/4"	11121	1/4"	11131	1/4"
11102	3/8"	11112	3/8"	11122	3/8"	11132	3/8"



Package: 25 pcs

For rubber hose

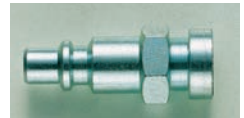
Ref. I	Ø int.-Ø ext.	Ref. S	Ø int.-Ø ext.	Ref. USA	Ø int.-Ø ext.	Ref. GB	Ø int.-Ø ext.
11170	6x10	/	/	/	/	/	/
11183	6x14	/	/	/	/	/	/
11171	8x12	/	/	/	/	/	/
11190	8x14	/	/	/	/	/	/
11187	8x17	/	/	/	/	/	/
11172	10x15	/	/	/	/	/	/
11188	10x17	/	/	/	/	/	/
11189	10x19	/	/	/	/	/	/



Package: 25 pcs

Bayonet

Ref. I	/	Ref. S	/	Ref. USA	/	Ref. GB	/
11260	/	/	/	11262	/	/	/



Package: 25 pcs

For rubber hose with spring

Ref. I	Ø int.-Ø ext.	Ref. S	Ø int.-Ø ext.	Ref. USA	Ø int.-Ø ext.	Ref. GB	Ø int.-Ø ext.
/	/	/	/	11220	4x6	/	/
11201	6x8	11211	6x8	11221	6x8	/	/
11202	8x10	/	/	/	/	/	/
11206	6x10	/	/	/	/	/	/
11204	8x12	/	/	/	/	/	/
11205	10x12	/	/	/	/	/	/



Package: 25 pcs

With rest

Ref. I	Ø int.	Ref. S	Ø int.	Ref. USA	Ø int.	Ref. GB	Ø int.
/	/	/	/	/	/	/	/
/	/	11301	6	11311	6	/	/
/	/	11303	8	11313	8	/	/
/	/	11304	10	11314	10	/	/
/	/	11305	11	11315	11	11322	11
/	/	11306	12	/	/	/	/

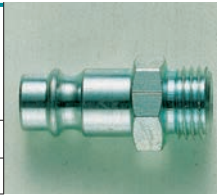


Package: 25 pcs

STEEL PLUGS ONLY FOR X300 U and X300

Male

Ref. D	Thread
11041	1/4"
11042	3/8"
11043	1/2"



Package: 25 pcs

Female

Ref. D	Thread
11141	1/4"
11142	3/8"



Package: 25 pcs

For rubber hose

Ref. D	Ø int. - Ø ext.
11198	6x14
11197	8x14
11199	8x17



Package: 25 pcs

For rubber hose with spring

Ref. D	Ø int. - Ø ext.
11241	6x8
11242	8x10
11243	6x10
11244	8x12
11245	10x12



Package: 25 pcs

With rest

Ref. D	Ø int.
11340	5
11341	6
11342	7
11343	8
11344	10
11345	11
11346	12
11347	13



Package: 25 pcs

FITTINGS

Connections, fittings and accessories for pneumatics made of high quality brass.

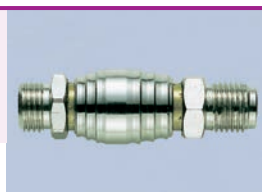
PAY ATTENTION TO THE FF SYMBOL that indicates the steel swiveling connections which prevent pipe distortion during their operation, max pressure 10 bar.

Designed with the exclusive assembly system by means of stainless steel snap rings and Buna-N O-RINGS positioned on the exterior of the air passage outlet which allow an air flow with no need for narrowing and with an excellent seal.

COUPLINGS

Male sliding cock

Ref.	Thread
12341	1/4"



Package: 25 pcs

Male drain cock

Ref.	Thread
12370	1/8"
12371	1/4"
12372	3/8"
12373	1/2"



Package: 25 pcs

CONNECTIONS

Bayonet female

Ref.	Thread
13000	1/8"
13001	1/4"
13002	3/8"



Package: 25 pcs

Bayonet with rest

Ref.	Ø int. hose
13060	6
13061	7
13062	8



Package: 25 pcs

Bayonet male

Ref.	Thread
13010	1/8"
13011	1/4"
13012	3/8"



Package: 25 pcs

Swiveling bayonet connection for rilsan or nylon hose

Ref.	Ø int. - Ø ext.
13090	4x6
13091	6x8
13092	8x10
13093	10x12



FF

Package: 25 pcs

Bayonet for rubber hose

Ref.	Ø int. - Ø ext.
13023	6x14
13033	8x14
13027	8x17
13028	10x17
13029	10x19



Package: 25 pcs

Female for rubber hose


Ref.	Thread	Ø int. - Ø ext.
13106	1/4"	6x14
13115	1/4"	8x14
13110	1/4"	8x17
13114	3/8"	6x14
13119	3/8"	8x14
13116	3/8"	8x17



Package: 25 pcs

Male for rubber hose

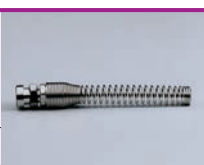
Ref.	Thread	Ø int.-Ø ext.
13133	1/8"	8x17
13136	1/4"	6x14
13143	1/4"	8x14
13140	1/4"	8x17
13144	3/8"	6x14
13149	3/8"	8x14
13146	3/8"	8x17



Package: 25 pcs

Fixed bayonet for nylon or rilsan hose


Ref.	Ø int.-Ø ext.
13180	4x6
13181	6x8
13182	8x10
13183	10x12



Package: 25 pcs

Fixed male with rest for every type of hose


Ref.	Thread	Ø int. hose
13231	1/8"	6
13232	1/8"	7
13250	1/8"	8
13251	1/8"	9
13233	1/4"	5
13234	1/4"	6
13235	1/4"	7
13236	1/4"	8
13237	1/4"	9
13253	1/4"	10
13254	1/4"	15
13238	1/4"	11
13239	3/8"	8
13240	3/8"	9
13256	3/8"	10
13257	3/8"	12
13258	3/8"	13
13247	3/8"	14
13248	3/8"	16
13242	1/2"	11
13243	1/2"	12
13244	1/2"	15
13245	1/2"	17
13246	1/2"	19



Package: 25 pcs

Swiveling female connection for rilsan or nylon hose


Ref.	Thread	Ø int.-Ø ext.
13220	1/4"	4x6
13221	1/4"	6x8
13222	1/4"	8x10
13223	3/8"	6x8
13224	3/8"	8x10
13225	3/8"	10x12



FF
Package: 25 pcs

Swiveling female for polyurethane hose


Ref.	Thread	Ø int.-Ø ext.
13190	1/4"	5x8
13191	1/4"	6x10
13192	1/4"	6.5x10
13193	1/4"	8x12
13194	1/4"	10x15



FF
Package: 25 pcs

Fixed female with rest for every type of hose


Ref.	Thread	Ø int. hose
13260	1/8"	5
13261	1/4"	5
13262	1/4"	6
13263	1/4"	7
13264	1/4"	8
13265	1/4"	9-10
13266	3/8"	7
13267	3/8"	8
13268	3/8"	9-10
13269	3/8"	11
13271	1/2"	12



Package: 25 pcs


Double rest

Ref.	Ø int.-Ø ext.
13300	5
13301	6
13303	8
13304	9-10
13305	11



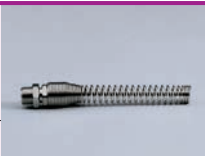
Package: 25 pcs

Swiveling male for polyurethane hose

Ref.	Thread	Ø int.-Ø ext.	FF
13311	1/4"	5x8	 Package: 25 pcs
13312	1/4"	6.5x10	
13326	1/4"	6x10	
13327	1/4"	8x12	
13315	3/8"	8x12	
13316	1/2"	9x12	
13317	1/2"	10x16	


Fixed male for nylon or rilsan hose

Ref.	Thread	Ø int.-Ø ext.
13200	1/4"	4x6
13201	1/4"	6x8
13202	1/4"	8x10
13204	3/8"	8x10
13205	3/8"	10x12




Package: 25 pcs


Swiveling male for nylon or rubber hose

Ref.	Thread	Ø int.-Ø ext.	FF
13210	1/4"	4x6	 Package: 25 pcs
13211	1/4"	6x8	
13212	1/4"	8x10	
13213	3/8"	6x8	
13214	3/8"	8x10	
13215	3/8"	10x12	
13216	1/2"	12x15	
13208	3/8"	9x12	
13209	3/8"	11x14	
13217	1/2"	15x20	

Swiveling male with rest for every type of hose

Ref.	Thread	Ø int. hose	FF
13330	1/4"	6	 Package: 25 pcs
13331	1/4"	7	
13332	1/4"	8	
13333	1/4"	9	
13334	1/4"	10	
13335	1/4"	11	
13336	3/8"	6	
13337	3/8"	8	
13338	3/8"	9	
13339	3/8"	10	
13340	3/8"	11	
13341	3/8"	12	
13342	3/8"	13	

Swiveling female with rest for every type of hose

Ref.	Thread	Ø int. hose	FF
13360	1/4"	6	 Package: 25 pcs
13361	1/4"	7	
13362	1/4"	8	
13363	1/4"	9	
13364	1/4"	10	
13365	3/8"	6	
13366	3/8"	7	
13367	3/8"	8	
13368	3/8"	9	
13369	3/8"	10	

FITTINGS

Milled nut

Ref.	Thread
14000	1/4"
14001	14x1.25
14002	3/8"



Package: 25 pcs

Female with milled nut

Ref.	Thread
14010	1/4"
14011	3/8"



Package: 25 pcs

Male with milled nut

Ref.	Thread
14021	1/4"
14022	3/8"



Package: 25 pcs

Double with milled nut

Ref.	Thread
14030	1/4"



Package: 25 pcs

T with milled nuts

Ref.	Thread
14040	1/4"



Package: 25 pcs

Cylindrical plug

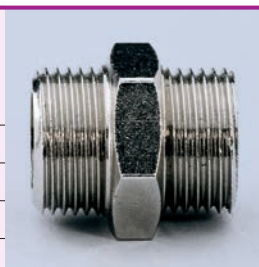
Ref.	Thread
14250	1/8"
14251	1/4"
14252	3/8"
14253	1/2"
14254	3/4"



Package: 25 pcs

Cylindrical nipple

Ref.	Thread
14100	1/8" - 1/8"
14101	1/4" - 1/4"
14102	3/8" - 3/8"
14103	1/2" - 1/2"
14104	1/8" - 1/4"
14105	1/8" - 3/8"
14107	1/4" - 3/8"
14108	1/4" - 1/2"
14109	3/8" - 1/2"
14110	1/2" - 3/4"
14111	3/4" - 3/4"



Package: 25 pcs

Conical nipple

Ref.	Thread
14130	1/8" - 1/8"
14131	1/4" - 1/4"
14132	3/8" - 3/8"
14133	1/2" - 1/2"
14134	1/8" - 1/4"
14135	1/8" - 3/8"
14136	1/4" - 1/2"
14137	1/4" - 3/8"
14138	3/8" - 1/2"
14139	1/2" - 3/4"



Package: 25 pcs

Cylindrical reduction

Ref.	Thread
14140	M 1/4" - F 1/8"
14141	M 3/8" - F 1/8"
14142	M 3/8" - F 1/4"
14143	M 1/2" - F 3/8"
14144	M 1/2" - F 1/4"
14145	M 3/4" - F 1/2"
14146	M 3/4" - F 3/8"
14147	M 1/2" - F 1/8"



Package: 25 pcs

Conical reduction

Ref.	Thread
14150	M 1/4" - F 1/8"
14151	M 3/8" - F 1/8"
14152	M 3/8" - F 1/4"
14153	M 1/2" - F 3/8"
14154	M 1/2" - F 1/4"
14155	M 3/4" - F 1/2"
14156	M 3/4" - F 3/8"



Package: 25 pcs

Extension

Ref.	Thread
14170	M 1/8" - F 1/8"
14171	M 1/8" - F 1/4"
14172	M 1/8" - F 3/8"
14174	M 1/4" - F 1/8"
14175	M 1/4" - F 1/4"
14176	M 1/4" - F 3/8"
14179	M 3/8" - F 1/4"
14180	M 3/8" - F 3/8"
14181	M 3/8" - F 1/2"
14184	M 1/2" - F 3/8"
14185	M 1/2" - F 1/2"



Package: 25 pcs

Double female

Ref.	Thread
14200	1/8" - 1/8"
14201	1/4" - 1/4"
14202	3/8" - 3/8"
14203	1/2" - 1/2"
14204	1/8" - 1/4"
14205	1/8" - 3/8"
14206	1/2" - 1/8"
14207	1/4" - 3/8"
14208	1/4" - 1/2"
14209	3/8" - 1/2"



Package: 25 pcs

L male/female

Ref.	Thread
14300	1/8"
14301	1/4"
14302	3/8"
14303	1/2"



Package: 25 pcs

T female/male/female

Ref.	Thread
14340	1/8"
14341	1/4"
14342	3/8"
14343	1/2"



Package: 25 pcs

L female/female

Ref.	Thread
14310	1/8"
14311	1/4"
14312	3/8"
14313	1/2"



Package: 25 pcs

T female/female/female

Ref.	Thread
14350	1/8"
14351	1/4"
14352	3/8"
14353	1/2"



Package: 25 pcs

L male/male

Ref.	Thread
14315	1/8"
14316	1/4"
14317	3/8"
14318	1/2"



Package: 25 pcs

T female/female/male

Ref.	Thread
14355	1/8"
14356	1/4"
14357	3/8"
14358	1/2"



Package: 25 pcs

Y female/male/female

Ref.	Thread
14320	1/8"
14321	1/4"
14322	3/8"
14323	1/2"



Package: 25 pcs

T male/male/male

Ref.	Thread
14360	1/8"
14361	1/4"
14362	3/8"
14363	1/2"



Package: 25 pcs

Y female/female/female

Ref.	Thread
14330	1/8"
14331	1/4"
14332	3/8"
14333	1/2"



Package: 25 pcs

Cross F.F.F.M.

Ref.	Thread
14370	1/8"
14371	1/4"
14372	3/8"
14373	1/2"



Package: 25 pcs

Cross M.M.M.M

Ref.	Thread
14375	1/8"
14376	1/4"
14377	3/8"
14378	1/2"



Package: 25 pcs

Cross F.F.F.F.

Ref.	Thread
14380	1/8"
14381	1/4"
14382	3/8"
14383	1/2"



Package: 25 pcs

Male quick plug "D" with milled nut

Ref.	Thread
11045	1/4"



Package: 25 pcs

Bayonet seals

Ref.
60920



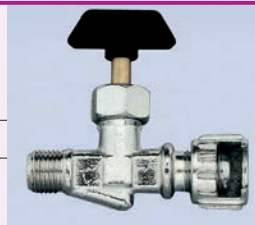
Package: 100 pcs

ACCESSORIES FOR PNEUMATIC

NEEDLE AIR LINE TAPS

Male with milled nut

Ref.	Thread
12010	1/4"
12011	3/8"
12012	1/2"



Package: 25 pcs

MINI BALL VALVES

Male with milled nut

Ref.	Thread
12110	1/4"
12111	3/8"



Package: 25 pcs

Male/Male

Ref.	Thread
12131	1/4"
12132	3/8"



Package: 25 pcs

Female/Female

Ref.	Thread
12150	1/8"
12151	1/4"
12152	3/8"
12153	1/2"



Package: 25 pcs

Male/ Female

Ref.	Thread
12170	1/8"
12171	1/4"
12172	3/8"
12173	1/2"




Package: 25 pcs

QUICK FITTINGS

Cylindrical male


Ref.	Thread	Ø int. - Ø ext.
15000	1/8"	4x6
15001	1/4"	4x6
15002	1/8"	6x8
15003	1/4"	6x8
15006	1/4"	8x10
15007	3/8"	8x10
15009	3/8"	10x12



Package: 25 pcs

Straight


Ref.	Ø int. - Ø ext.
15070	4x6
15071	6x8
15072	8x10
15073	10x12



Package: 25 pcs

L male


Ref.	Thread	Ø int. - Ø ext.
15090	1/8"	4x6
15093	1/4"	6x8
15096	1/4"	8x10
15098	1/2"	8x10
15099	3/8"	10x12



Package: 25 pcs

L female


Ref.	Thread	Ø int. - Ø ext.
15121	1/4"	6x8



Package: 25 pcs

Elbow


Ref.	Ø hose
15140	4x6
15141	6x8
15142	8x10
15143	10x12



Package: 25 pcs

T central male


Ref.	Thread	Ø hose
15160	1/8"	4x6
15162	1/8"	6x8
15163	1/4"	6x8
15164	3/8"	6x8
15165	1/8"	8x10
15166	1/4"	8x10
15169	3/8"	10x12



Package: 25 pcs

T EE


Ref.	Ø int. - Ø ext.
15180	4x6
15181	6x8
15182	8x10
15183	10x12



Package: 25 pcs

Blocking nut

Ref.	Ø hose
15400	4x6
15401	6x8
15402	8x10
15403	10x12




Package: 25 pcs

CONNECTIONS WITH FERRULES

Conical male


Ref.	Thread	Ø ext. hose
16000	1/8"	6
16001	1/4"	6
16002	1/8"	8
16003	1/4"	8
16004	3/8"	8
16005	1/4"	10
16006	3/8"	10
16007	3/8"	12



Package: 25 pcs

Straight


Ref.	Ø ext. hose
16040	6
16041	8
16042	10
16043	12



Package: 25 pcs

L male


Ref.	Thread	Ø ext. hose
16060	1/8"	6
16061	1/4"	6
16062	1/8"	8
16063	1/4"	8
16064	3/8"	8
16065	1/4"	10
16066	3/8"	10
16067	3/8"	12
16068	1/2"	12



Package: 25 pcs

T central male


Ref.	Thread	Ø ext. hose
16120	1/8"	6
16121	1/4"	6
16122	1/8"	8
16123	1/4"	8
16124	3/8"	8
16125	1/4"	10
16126	3/8"	10
16127	3/8"	12
16128	1/2"	12



Package: 25 pcs

Elbow


Ref.	Ø ext. hose
16100	6
16101	8
16102	10
16103	12



Package: 25 pcs

T EE


Ref.	Ø ext. hose
16160	6
16161	8
16162	10
16163	12



Package: 25 pcs

Blocking nut


Ref.	Ø ext. hose
16300	6
16301	8
16302	10
16303	12



Package: 25 pcs

Brass ferrule

Ref.	Ø ext. hose
16320	6
16321	8
16322	10
16323	12



Package: 100 pcs

AUTOMATIC FITTINGS

Conical male


Ref.	Thread	Ø ext. hose
17000	1/8"	4
17001	1/8"	6
17002	1/4"	6
17003	1/8"	8
17004	1/4"	8
17005	3/8"	8
17006	1/4"	10
17007	3/8"	10
17008	1/4"	12
17009	3/8"	12



Package: 25 pcs

Straight


Ref.	Ø ext. hose
17040	4
17041	6
17042	8
17043	10
17044	12



Package: 25 pcs

L male


Ref.	Thread	Ø ext. hose
17101	1/8"	4
17102	1/8"	6
17104	1/8"	8
17105	1/4"	8
17107	1/4"	10
17108	3/8"	10
17109	1/4"	12
17110	3/8"	12



Package: 25 pcs

L swiveling male


Ref.	Thread	Ø ext. hose
17130	1/8"	4
17131	1/8"	6
17132	1/4"	6
17133	1/8"	8
17134	1/4"	8
17135	3/8"	8
17136	1/4"	10
17137	3/8"	10
17138	1/4"	12
17139	3/8"	12



Package: 25 pcs

Elbow


Ref.	Ø ext. hose
17150	4
17151	6
17152	8
17153	10
17154	12



Package: 25 pcs

Single hollow bolt

Ref.	Thread	Ø ext. hose
17400	M5	4
17401	1/8"	4
17402	1/8"	6
17403	1/4"	6
17404	1/8"	8
17405	1/4"	8
17406	1/4"	10
17407	3/8"	10



Package: 25 pcs

T central male *swiveling

Ref.	Thread	Ø ext. hose
17201	1/8"	4
17202	1/8"	6
17203*	1/4"	6
17204	1/8"	8
17205	1/4"	8
17206*	3/8"	8
17207	1/4"	10
17208	3/8"	10
17209	1/4"	12
17210	3/8"	12



Package: 25 pcs

Female

Ref.	Thread	Ø ext. hose
17020	1/8"	4
17021	1/8"	6
17022	1/4"	6
17023	1/8"	8
17024	1/4"	8
17025	1/4"	10



Package: 25 pcs

T EE

Ref.	Ø ext. hose
17300	4
17301	6
17302	8
17303	10
17304	12



Package: 25 pcs

Bulckhead straight

Ref.	Ø ext. hose
17050	4
17051	6
17052	8
17053	10
17054	12



Package: 25 pcs

MODULAR FILTERS REGULATORS LUBRICATORS

Ideal for use in bodyshops, mechanical garages and wherever there is need to treat the air and adjust the flow. From simple regulators, filters or lubricators to filter groups for pneumatic installation (filter+lubricator) or spray installations (filter+coalescent microfilter).

MICROPRESSURE REGULATOR

Membrane micro regulator, equipped with regulation knob with relieving lock.
Operating air pressure: MAX 16 bar
Regulator range: 0-8 bar
Gauge connection: M 1/8"

Diameter air inlet 1/8"	Ref. 61100
Diameter air inlet 1/4"	Ref. 61101

Package: 1 pcs
Weight: 90 g



Recommended use:



PRESSURE REGULATOR

Membrane micro regulator, equipped with regulation knob with relieving lock.
Operating air pressure: MAX 16 bar
Regulator range: 0-8 bar
Gauge connection: M 1/8"

Diameter air inlet 1/4" - (*)	Ref. 61111
Diameter air inlet 3/8" - (**)	Ref. 61112
Diameter air inlet 1/2" - (***)	Ref. 61113

Package: 1 pcs
(*) Weight: 135 g - (**) Weight: 320 g - (***) Weight: 440 g



Recommended use:



FILTER

Filter with filtering element with 20 micron porosity.
Special reinforced bowl.
Max inlet pressure: MAX 16 bar

Diameter air inlet 1/4" - (*)	Ref. 61121
Diameter air inlet 3/8" - (**)	Ref. 61122
Diameter air inlet 1/2" - (***)	Ref. 61123

Package: 1 pcs
(*) Weight: 115 g - (**) Weight: 230 g - (***) Weight: 355 g



Recommended use:



FILTER REGULATOR

Membrane regulator filter with 20 micron synthetic filtering element, equipped with regulation knob with relieving lock.
Special reinforced cup

Operating air pressure: MAX 16 bar
Regulator range: 0-8 bar
Gauge connection: M 1/8"

Diameter air inlet 1/4" - (*)	Ref. 61131
Diameter air inlet 3/8" - (**)	Ref. 61132
Diameter air inlet 1/2" - (***)	Ref. 61133

Package: 1 pcs - (*) Weight: 115 g - (**) Weight: 230 g - (***) Weight: 355 g



Recommended use:



COALESCENT MICROFILTER

Coalescent microfilter.
Efficiency: 99.9%

Diameter air inlet 1/4" - (*)	Ref. 61201
Diameter air inlet 3/8" - (**)	Ref. 61202
Diameter air inlet 1/2" - (***)	Ref. 61203

Package: 1 pcs
(*) Weight: 115 g - (**) Weight: 225 g - (***) Weight: 345 g



Recommended use:



LUBRICATOR

Lubricator working with oil fogging propotional system.
Special reinforced bowl.
Max inlet pressure: MAX 16 bar

Diameter air inlet 1/4" - (*)	Ref. 61141
Diameter air inlet 3/8" - (**)	Ref. 61142
Diameter air inlet 1/2" - (***)	Ref. 61143

Package: 1 pcs
(*) Weight: 115 g - (**) Weight: 230 g - (***) Weight: 360 g



Recommended use:



FILTER REGULATOR WITH LUBRICATOR

Filter group which associates the features of the filter regulator with those of the lubricator.

Diameter air inlet 1/4" - (*)	Ref. 61151
Diameter air inlet 3/8" - (**)	Ref. 61152
Diameter air inlet 1/2" - (***)	Ref. 61153

Package: 1 pcs
(*) Weight: 310 g - (**) Weight: 675 g - (***) Weight: 975 g



Recommended use:



FILTER - REGULATOR - LUBRICATOR

Filter group which associates the features of the filter, the regulator and those of the lubricator.

Diameter air inlet 1/4" - (*)	Ref. 61161
Diameter air inlet 3/8" - (**)	Ref. 61162
Diameter air inlet 1/2" - (***)	Ref. 61163

Package: 1 pcs
(*) Weight: 380 g - (**) Weight: 850 g - (***) Weight: 1.25 Kg



Recommended use:



ACCESSORIES

Unit connection kit for 1/8" and 1/4"	Ref. 61190
Unit connection kit for 3/8"	Ref. 61191
Unit connection kit for 1/2"	Ref. 61194
Wall unit connection for 1/8" and 1/4"	Ref. 61192
Wall unit connection for 3/8" and 1/2"	Ref. 61193
Gauge with rear connection 1/8", diameter 40 mm (*)	Ref. 61301

Package: 1 pcs - (*) 4 pcs

GAUGE AND AIR COMPRESSED ACCESSORIES

GAUGE

Ref. 61300

Radial connection - M 1/4"
Double pressure gauge range 0 - 12 bar / 0 - 170 psi
Diameter 63 mm

Package: 4 pcs
Weight: 385 g



GAUGE

Double pressure gauge range 0 - 12 bar / 0 - 170 psi

Rear connection - M 1/8" - diameter 40 mm (*) Ref. 61301

Rear connection - M 1/8" - diameter 50 mm (**) Ref. 61302

Rear connection - M 1/4" - diameter 63 mm (***) Ref. 61303

Package: 4 pcs
(*) Weight: 290 g - (**) Weight: 335 g - (***) Weight: 345 g



GAUGE - CEE

Pressure gauge range 0 - 10 bar (only Ref. 61314 double range 0 - 10 bar / 0 - 140 psi)

Rear connection - M 1/4" - diameter 63 mm (*) Ref. 61310

Rear connection - M 1/4" - diameter 80 mm (**) Ref. 61311

Rear connection - M 1/4" - diameter 63 mm (***) Ref. 61314

Package: 4 pcs - (only Ref. 61311 package 1 pcs)
(*) Weight: 405 g - (**) Weight: 230 g - (***) Weight: 405 g



GAUGE

Ref. 61313

Rear connection - M 1/4"
Double pressure gauge range 0 - 10 bar / 0 - 140 psi
Diameter 80 mm

Package: 1 pcs
Weight: 105 g



MICROPRESSURE REDUCER Ref. 61000

Micropressure reducer.
Needle air line tap M 1/4"
Connection: F 1/4"
Pressure gauge range 0 - 12 bar

Package: 3 pcs
Weight: 905 g



PRESSURE REDUCER

Pressure reducer with ceramic filter and gauge.
Outlet with 2 needle air line taps.

Connection - M 3/8" - pressure gauge range 0 - 12 bar (*)	Ref. 61001
Connection - M 1/2" - pressure gauge range 0 - 16 bar (**)	Ref. 61002
Connection - F 1/2" - pressure gauge range 0 - 12 bar (***)	Ref. 61003

Package: 2 pcs - (only Ref. 61003 package 1 pcs)

(*) Weight: 1.3 Kg - (**) Weight: 2.1 Kg - (***) Weight: 1.2 Kg



SAFETY VALVE

Model with connection

Connection - M 1/4" - weight: 340 g - package: 5 pcs	Ref. 61050
Connection - M 3/8" - weight: 520 g - package: 5 pcs	Ref. 61051
Connection - M 3/8" - weight: 520 g - package: 5 pcs	*Ref. 61051/CE
Connection - M 1/2" - weight: 440 g - package: 3 pcs	Ref. 61052
Connection - M 1/2" - weight: 440 g - package: 3 pcs	*Ref. 61052/CE
Connection - M 3/4" - weight: 630 g - package: 2 pcs	Ref. 61053
Connection - M 3/4" - weight: 630 g - package: 2 pcs	*Ref. 61053/CE

(*) Versions at 10 bar with EC approved certificate.



AIR PRESSURE SWITCH

Air pressure switch with drain valve.

Mini monophase model up to 4 HP - (*)	Ref. 61060
Special mini triphase model up to 5.5 HP - (**)	Ref. 61061

Package: 1 pcs

(*) weight: 310 g - (**) weight: 605 g



WITHHOLDING VALVE

Ref. 61065

Horizontal withholding valve with connection for nylon hose
Connection: F 1/2" - M 3/8"

Package: 5 pcs

Weight: 865 g



HOSES

Complete and professional air hose range for any type of use, in various lengths and versions. From high performance Polyurethane to flexible Ragno, to efficient Rilsan to the proven and always reliable Nylon, Rubber and PVC; Walmecc presents the new Rubberflex_{THT/SR} hose with high performance in terms of sturdiness, durability, seal, flexibility and temperature resistance.

STRAIGHT POLYURETHANE

100 m coil

Substrate and cover: 100% polyurethane
Reinforcement: 550/1100 Trevira Hoechst polyester yarn
Operating air pressure: 20 bar - exploding pressure: 60 bar
Temperature: - 25°C + 60°C

Internal diameter 6 mm - external diameter 10 mm	Ref. 60200
Internal diameter 8 mm - external diameter 12 mm	Ref. 60201
Internal diameter 10 mm - external diameter 14.5 mm	Ref. 60202

Package: 1 pcs



STRAIGHT POLYURETHANE

10 m coil with 2 swiveling female 1/4" fittings

Substrate and cover: 100% polyurethane
Reinforcement: 550/1100 Trevira Hoechst polyester yarn
Operating air pressure: 20 bar - exploding pressure: 60 bar
Temperature: - 25°C + 60°C

Internal diameter 6 mm - external diameter 10 mm	Ref. 60210
Internal diameter 8 mm - external diameter 12 mm	Ref. 60211
Internal diameter 10 mm - external diameter 14.5 mm	Ref. 60212

Package: 1 pcs



STRAIGHT POLYURETHANE

25 m coil with 2 swiveling female 1/4" fittings.

Substrate and cover: 100% polyurethane
Reinforcement: 550/1100 Trevira Hoechst polyester yarn
Operating air pressure: 20 bar - exploding pressure: 60 bar
Temperature: - 25°C + 60°C

Internal diameter 6 mm - external diameter 10 mm	Ref. 60220
Internal diameter 8 mm - external diameter 12 mm	Ref. 60221
Internal diameter 10 mm - external diameter 14.5 mm	Ref. 60222

Package: 1 pcs



RAGNO HOSE

50 m coil

Substrate and cover: polyurethane anti-abrasive and thermoplastic rubber
Reinforcement: polyester yarn
Operating air pressure: 20 bar - exploding pressure: 60 bar
Temperature: - 20°C + 60°C

Internal diameter 10 mm - external diameter 15 mm	Ref. 60250
Internal diameter 8 mm - external diameter 12 mm	Ref. 60254

Package: 1 pcs



RAGNO HOSE

Ref. 60252

10 m coil with fittings

Substrate and cover: polyurethane anti-abrasive and thermoplastic rubber
 Reinforcement: polyester yarn
 Operating air pressure: 20 bar - exploding pressure: 60 bar
 Temperature: - 20°C + 60°C
 Internal diameter 10 mm - external diameter 15 mm

Package: 1 pcs



SUPERFLEX

High performance and resistance hose, PU (Polyurethane) composite and thermoplastic rubber, reinforced with polyester. Antistatic.

100 m coil

Bottom layer and cover: PU composite and thermoplastic rubber
 Reinforcing: polyester fiber
 Operating air pressure: 15 - 20 bar
 Exploding pressure: 60 bar
 Temperature: - 15°C + 70°C

Internal diameter 10 mm - external diameter 15 mm

Ref. 60307

Package: 1 pcs



SUPERFLEX

High performance and resistance hose, PU (Polyurethane) composite and thermoplastic rubber, reinforced with polyester. Antistatic.

12 m coil

Bottom layer and cover: PU composite and thermoplastic rubber
 Reinforcing: polyester fiber
 Operating air pressure: 15 - 20 bar
 Exploding pressure: 60 bar
 Temperature: - 15°C + 70°C

Internal diameter 10 mm - external diameter 15 mm

Ref. 60309

Package: 1 pcs



POLYURETHANE SPIRAL HOSE

4 m spiral hose with one straight extension

Operating air pressure: 20 bar - exploding pressure: 60 bar
 Temperature: - 25°C + 60°C

Internal diameter 3.6 mm - external diameter 6 mm

Ref. 60030

Internal diameter 5 mm - external diameter 8 mm

Ref. 60031

Package: 5 pcs



POLYURETHANE SPIRAL HOSE

8 m spiral hose with 2 straight extensions

Operating air pressure: 20 bar - exploding pressure: 60 bar
 Temperature: - 25°C + 60°C

Internal diameter 3.6 mm - external diameter 6 mm

Ref. 60040

Internal diameter 5 mm - external diameter 8 mm

Ref. 60041

Internal diameter 6.5 mm - external diameter 10 mm

Ref. 60042

Internal diameter 8 mm - external diameter 12 mm

Ref. 60043

Internal diameter 10 mm - external diameter 16 mm *

Ref. 60044

Package: 2 pcs - * Package: 1 pcs



POLYURETHANE SPIRAL HOSE

40 m spiral hose without straight extensions
 Operating air pressure: 20 bar- exploding pressure: 60 bar
 Temperature: - 25°C + 60°C

Internal diameter 5 mm - external diameter 8 mm	Ref. 60051
Internal diameter 6.5 mm - external diameter 10 mm	Ref. 60052
Internal diameter 8 mm - external diameter 12 mm	Ref. 60053
Internal diameter 10 mm - external diameter 16 mm	Ref. 60054

Package: 1 pcs



POLYURETHANE SPIRAL HOSE Ref. 60520

4 m polyurethane spiral hose equipped with PROFI blow gun with silenced nozzle meeting EEC regulations (ref. 50006) and 2 swiveling fittings M 1/4" with protective steel springs.

Package: 5 pcs



RILSAN SPIRAL HOSE

Rilsan spiral hose
 Operating air pressure: 20 bar
 Basic package: 6 x 8 = 270 m; 8 x 10 = 180 m; 10 x 12 = 120 m

Internal diameter 6 mm - ext 8 mm - length 10 m - 27 pcs	Ref. 60007
Internal diameter 6 mm - ext 8 mm - length 15 m - 18 pcs	Ref. 60008
Internal diameter 6 mm - ext 8 mm - length 30 m - 9 pcs	Ref. 60009
Internal diameter 8 mm - ext 10 mm - length 10 m - 18 pcs	Ref. 60012
Internal diameter 8 mm - ext 10 mm - length 15 m - 12 pcs	Ref. 60013
Internal diameter 8 mm - ext 10 mm - length 30 m - 6 pcs	Ref. 60014
Internal diameter 10 mm - ext 12 mm - length 10 m - 12 pcs	Ref. 60017
Internal diameter 10 mm - ext 12 mm - length 15 m - 8 pcs	Ref. 60018
Internal diameter 10 mm - ext 12 mm - length 30 m - 4 pcs	Ref. 60019



STRAIGHT RILSAN HOSE

100 m straight rilsan hose - Operating air pressure: 20 bar

Internal diameter 4 mm - ext 6 mm	Ref. 60326
Internal diameter 6 mm - ext 8 mm	Ref. 60327
Internal diameter 8 mm - ext 10 mm	Ref. 60328
Internal diameter 10 mm - ext 12 mm	Ref. 60329

Package: 1 pcs



RUBBER

100 m straight rubber hose

Operating air pressure: 20 bar

Internal diameter 6 mm - external diameter 14 mm	Ref. 60300
Internal diameter 8 mm - external diameter 17 mm	Ref. 60301

Package: 1 pcs



NYLON

Plastic coated nylon 6 hose

Operating air pressure: 25 bar

Basic package: 6 x 8=270 m; 8 x 10 =180 m; 10 x 12 =120 m

Internal diameter 6 mm - ext 8 mm - length 10 m - 27 pcs	Ref. 60107
Internal diameter 6 mm - ext 8 mm - length 15 m - 18 pcs	Ref. 60108
Internal diameter 6 mm - ext 8 mm - length 30 m - 9 pcs	Ref. 60109
Internal diameter 8 mm - ext 10 mm - length 10 m - 18 pcs	Ref. 60112
Internal diameter 8 mm - ext 10 mm - length 15 m - 12 pcs	Ref. 60113
Internal diameter 8 mm - ext 10 mm - length 30 m - 6 pcs	Ref. 60114
Internal diameter 10 mm - ext 12 mm - length 10 m - 12 pcs	Ref. 60117
Internal diameter 10 mm - ext 12 mm - length 15 m - 8 pcs	Ref. 60118
Internal diameter 10 mm - ext 12 mm - length 30 m - 4 pcs	Ref. 60119



PVC

Ref. 60330

Clear hose in plastified PVC

Operating air pressure: 20 bar

Internal diameter 8 mm - ext 13 mm

Length 100 m

Package: 1 pcs



HOBBY LINE

Asturomec® also means D.I.Y.: in fact in addition to the range for professionals, there is also a dedicated D.I.Y. range. Handy, easy to use and versatile products to meet all D.I.Y. needs; new, attractive packaging for point of sale make the displaying easy, providing high product visibility. Available in carton boxes, blister packs or handy display units.



PAINT SPRAY GUNS:

PRIMA

- New conception spray gun for D.I.Y. and not - D.I.Y.
- Body entirely in aluminium
- Ergonomic and functional

- High precision of product and fan regulation
- New anti-solvent sealing gaskets

PRIMA

(with 680 cc nylon cup) - Ref. 296**

Ideal for all types of paint and for work on any surfaces

Body: polished aluminium

Air cap: nickel-plated zamak

Needle-nozzle: brass

Adjustments: product -fan

Weight: 645 g

Operating air pressure: 2.0 - 3.5 bar

Air consumption: 180 - 280 l/min.

Ø nozzle: 1.2 - 1.5 - 1.7 - 1.8 - 2.0 - 2.5

500 cc aluminium cup version (Weight: 545 g)

Ref. 297**

750 cc aluminium cup version (Weight: 595 g)

Ref. 298**



NOTE:
add nozzle Ø to Ref. (**)

Recommended use:



PRIMA

Ref. 295**

Ideal for all types of paint and for work on any surfaces

Bayonet suction cup: aluminium 1000 cc

Body: polished aluminium

Air cap: nickel-plated zamak

Needle-nozzle: brass

Adjustments: product -fan

Weight: 720 g

Operating air pressure: 2.0 - 3.5 bar

Air consumption: 180 - 280 l/min.

Ø nozzle: 1.2 - 1.5 - 1.7 - 1.8 - 2.0 - 2.5



NOTE:
add nozzle Ø to Ref. (**)

Recommended use:



SPARE PARTS

Needle-nozzle-air cap for **PRIMA**

Nozzle diameter: 1.2 Ref. 40130

Nozzle diameter: 1.5 Ref. 40131

Nozzle diameter: 1.7 Ref. 40132

Nozzle diameter: 1.8 Ref. 40133

Nozzle diameter: 2.0 Ref. 40134

Nozzle diameter: 2.5 Ref. 40135



Recommended use:



COMPLETE RANGE OF:

COMPRESSED AIR GUNS

Blow guns: PA - PA/L
Washing guns: NE/S - NE

Sandblasting guns: PS/E - PS/ES
Protective and sealant guns: TS/ES - TS/E

PA

Ref. 50080

Aluminium blow gun suitable for every use.
Short nozzle
Operating air pressure: 1.0 - 6.0 bar

Weight: 2.1 Kg
Package: 12 pcs



Recommended use:



PA/L

Ref. 50081

Aluminium blow gun with 150 mm long straight barrel
Operating air pressure: 1.0 - 6.0 bar

Weight: 1.8 Kg
Package: 8 pcs



Recommended use:



NE/S

Ref. 50086

Aluminium washing gun
Bayonet cup with screw closure: 1000 cc aluminium
Adjustable liquid atomiser nozzle: brass
Extra large filler opening - bayonet closure
Operating air pressure: 2.0 - 8.0 bar

Weight: 920 g
Package: 2 pcs



Recommended use:



NE

Ref. 50085

Aluminium washign gun
Bayonet cup with screw closure: 1000 cc painted steel
Adjustable liquid atomiser nozzle: brass
Operating air pressure: 2.0 - 8.0 bar

Weight: 1.1 Kg
Package: 2 pcs



Recommended use:



PS/E

Ref. 50090

Sanblasting gun suitable for medium surfaces.
 Body: aluminium
 Nozzle: super-tough cemented steel Ø 6 mm
 Immersed hoses: 2 m hose - diameter 8x13
 Operating air pressure: 5.0 - 8.0 bar

Weight: 640 g
 Package: 1 pcs



Recommended use:



PS/ES

Ref. 50091

Sanblasting gun suitable for medium surfaces
 Bayonet cup with screw closure: 1000 cc aluminium
 Body: aluminium
 Nozzle: super-tough cemented steel Ø 6 mm with adjustable sand delivery
 Operating air pressure: 5.0 - 8.0 bar

Weight: 770 g
 Package: 1 pcs



Recommended use:



TS/ES

Ref. 50096

Gun for applying single component and two component sound-proofing protective compounds, whether pre-mixed including polyurethane-based compounds or loose.
 Bayonet cup with screw closure: 1000 cc aluminium
 Body: aluminium
 Operating air pressure: 2.0 - 5.0 bar

Weight: 670 g
 Package: 1 pcs



Recommended use:



TS/E

Ref. 50095

Gun for applying single component soundproofing protective compounds including polyurethane-based compounds and protective waxes in pre-packed 1 l tins.
 Body: aluminium with disposable connector in Hostaform C®.
 Featuring: 60 cm hose extension with special nozzle for box parts
 Operating air pressure: 2.0 - 5.0 bar

Weight: 220 g
 Package: 1 pcs



Recommended use:



NOZZLE

Ref. 0920901

Hostaform C® connection adjustable. Spare part for TS/E and TS/N.

Weight: 30 g
 Package: 1 pcs



Recommended use:



Products available in **BLISTER**

The blister pack programme is an eye-catching and customer-friendly means of presenting the range at the sales point. The products, inside an attractive and understandable blister pack can be displayed on any wall mounting, therefore rationing space and obtaining a notable visible effect which facilitates sales.

UR/S PLUS (with 680 cc nylon cup) - Ref. 27314/B

Gravity feed spray gun
Ø nozzle: 1.4

Blister dimension: 40x20.5 cm
Weight: 925 g
Package: 6 pcs

See features on page 15 - SPRAY GUN section



UR PLUS (with 1000 cc aluminium cup) - Ref. 27017/B

Spray gun with suction feed for every type of spraying
Ø nozzle: 1.7

Blister dimension: 40x20.5 cm
Weight: 1.1 Kg
Package: 6 pcs

See features on page 15 - SPRAY GUN section



PRIMA (with 680 cc nylon cup) - Ref. 29615/B

Gravity feed spray gun ideal for D.I.Y.
Ø nozzle: 1.5

Blister dimension: 40x20.5 cm
Weight: 775 g
Package: 6 pcs

See features on page 92 - HOBBY LINE section



PRIMA (with 1000 cc aluminium cup) - Ref. 29517/B

Gravity feed spray gun ideal for D.I.Y.
Ø nozzle: 1.7

Blister dimension: 40x20.5 cm
Weight: 870 g
Package: 6 pcs

See features on page 92 - HOBBY LINE section



ES/RV & DECOR KIT (with 250 cc nylon cup) - Ref. 34707/B

Mini spray gun for decorations and touch-ups
Ø nozzle: 0.7
Standard: 3 glass cup, 20 cc, ES/RV adapter to be screwed onto the body

Blister dimension: 40x20.5 cm
Weight: 740 g
Package: 2 pcs

See features on page 17-18 - SPRAY GUN section



PA

Ref. 50080/B

Aluminium blow gun suited for any use
Short nozzle

Blister dimension: 20x20.5 cm
Weight: 200 g
Package: 10 pcs

See features on page 93 - HOBBY LINE section



PA/L

Ref. 50081/B

Blow gun with aluminium body
150 mm long barrel

Blister dimension: 20x20.5 cm
Weight: 250 g
Package: 10 pcs

See features on page 93 - HOBBY LINE section



PA/4N

Ref. 50047/B

Blow gun with nylon body.
Short nozzle

Blister dimension: 20x20.5 cm
Weight: 220 g
Package: 10 pcs

See features on page 42 - COMPRESSED AIR GUNS section



PA/4NL

Ref. 50048/B

Blow gun with nylon body.
150 mm long barrel

Blister dimension: 20x20.5 cm
Weight: 255 g
Package: 10 pcs

See features on page 42 - COMPRESSED AIR GUNS section



PG/S

Ref. 50106/B

Inflating gun with nylon body

Blister dimension: 40x20.5 cm
Weight: 510 g
Package: 10 pcs

See features on page 48 - COMPRESSED AIR GUNS section



PG/S CEE OM

Ref. 50108/OB

Inflating gun to ECC standards.

Blister dimension: 40x20.5 cm
Weight: 530 g
Package: 10 pcs

See features on page 48 - COMPRESSED AIR GUNS section



INFLATING HEAD

Ref. 50129/B

2 spare inflating heads (ref.50121) for inflating guns.

Blister dimension: 7x14 cm
Weight: 65 g
Package: 12 pcs

See features on page 49 - COMPRESSED AIR GUNS section

**INFLATING KIT**

Ref. 50125/B

Inflating kit made of 3 special inflating heads for: bicycles, boats and balls

Blister dimension: 7x14 cm
Weight: 65 g
Package: 12 pcs

See features on page 49 - COMPRESSED AIR GUNS section

**N4**

(with 1000 cc aluminium cup) - Ref. 50173/B

Aluminium washing gun
Adjustable liquid atomiser nozzle

Blister dimension: 47x20.5 cm
Weight: 630 g
Package: 8 pcs

See features on page 51 - COMPRESSED AIR GUNS section

**NE**

(with 1000 cc aluminium cup) - Ref. 50085/B

Aluminium washing gun with adjustable liquid atomiser

Blister dimension: 47x20.5 cm
Weight: 630 g
Package: 8 pcs

See features on page 93 - HOBBY LINE section

**HYDROJET**

Ref. 50160/B

Gun for mixing liquids with compressed air, manufactured in Hostaform C®

Blister dimension: 47x20.5 cm
Weight: 440 g
Package: 1 pcs

See features on page 51 - COMPRESSED AIR GUNS section

**SUPERMISTRAL**

Ref. 50300/B

Sandblasting gun suitable for work on small surfaces and fitted with automatic sand recovery system. Includes 4 rubber nozzles and 1 abrasive sand box of g 700.

Blister dimension: 33x47 cm
Weight: 2.6 Kg
Package: 1 pcs

See features on page 54 - COMPRESSED AIR GUNS section



MISTRAL

Ref. 50301/B

Sandblasting gun suitable for work on small surfaces, includes 1 abrasive sand box of g 700

Blister dimension: 33x47 cm

Weight: 2.4 Kg

Package: 1 pcs

See features on page 54 - COMPRESSED AIR GUNS section

**PS/E**

Ref. 50090/B

Sandblasting gun for suitabel work on medium surfaces. Cemented steel nozzle.

Blister dimension: 40x20.5 cm

Weight: 650 g

Package: 6 pcs

See features on page 94 - HOBBY LINE section

**TS/E**

Ref. 50095/B

Gun for applying single component protective compounds in pre-packed 1 l tins. Supplied with 2 disposable Hostaform C® nozzle.

Blister dimension: 40x20.5 cm

Weight: 580 g

Package: 10 pcs

See features on page 94 - HOBBY LINE section

**EOLO**

Ref. 50151/B

Vacuum cleaning for cleaning inside motor vehicles.

Blister dimension: 26x40 cm

Weight: 530 g

Package: 1 pcs

See features on page 60 - COMPRESSED AIR GUNS section

**MI**

Ref. 62000/B

Air impact wrench 1/2"

Blister dimension: 24x30 cm

Weight: 2.3 Kg

Package: 1 pcs

See features on page 62 - PNEUMATIC TOOLS section

**MK**

Ref. 62005/B

Pneumatic ratchet wrench 1/2"

Blister dimension: 15x36 cm

Weight: 1.27 Kg

Package: 1 pcs

See features on page 62 - PNEUMATIC TOOLS section



MS

Ref. 62002/B

Air hammer

Blister dimension: 21x32 cm

Weight: 1.6 kg

Package: 1 pcs

See features on page 62 - PNEUMATIC TOOLS section

**MT**

Ref. 62004/B

Reversible air drill 3/8"

Blister dimension: 21x29 cm

Weight: 1.02 kg

Package: 1 pcs

See features on page 62 - PNEUMATIC TOOLS section

**GR/E**

Ref. 62006/B

Air grease gun

Blister dimension: 27x49 cm

Weight: 1.5 kg

Package: 1 pcs

See features on page 59 - COMPRESSED AIR GUNS section

**SET OF 4 TIPS**

Ref. 62003/B

Set of 4 tips + spring

Blister dimension: 21x29 cm

Weight: 520 g

Package: 1 pcs

See features on page 63 - PNEUMATIC TOOLS section

**SET OF SLEEVES**

Ref. 62001/B

Set of 10 hexagonal sleeves 1/2"

Blister dimension: 21x29 cm

Weight: 1.4 Kg

Package: 1 pcs

See features on page 63 - PNEUMATIC TOOLS section

**BOTTLE OF OIL**

Ref. 62008/B

Bottle of oil

Blister dimension: 11x17 cm

Weight: 132 g

Package: 1 pcs

See features on page 63 - PNEUMATIC TOOLS section



5 PIECES KIT IN BLISTER

PROFESSIONAL KIT 1

Ref. 50500

Kit of 5 accessories for compressors including:

- ① - Paint spray gun mod. **UR PLUS** Ø 1.4
- ② - Washing gun mod. **NE**
- ③ - Inflating gun mod. **PG/S**
- ④ - Blow gun mod. **PA/4N**
- ⑤ - Spiral hose with fittings

PROFESSIONAL KIT 1/CEE

Ref. 50500/O

Kit of 5 accessories same as PROFESSIONAL KIT 1 but with:

- EEC standards inflating gun mod. **PG/S CEE/OM**

Blister dimension: 45x34.5 cm

Weight: 2.170 kg

Package: 10 pcs



PROFESSIONAL KIT 2

Ref. 50505

Kit of 5 accessories for compressors including:

- ① - Paint spray gun mod. **UR/S PLUS** Ø 1.4
- ② - Washing gun mod. **NE**
- ③ - Inflating gun mod. **PG/S**
- ④ - Blow gun mod. **PA/4N**
- ⑤ - Spiral hose with fittings

PROFESSIONAL KIT 2/CEE

Ref. 50505/O

Kit of 5 accessories same as PROFESSIONAL KIT 2 but with:

- EEC standards inflating gun mod. **PG/S CEE/OM**

Blister dimension: 45x34.5 cm

Weight: 2.390 kg

Package: 10 pcs



SEKUR KIT 1

Ref. 100010

Kit of 5 accessories for compressors including:

- ① - Paint spray gun mod. **PRIMA** with suction cup Ø 1.5
- ② - Washing gun mod. **NE**
- ③ - Inflating gun mod. **PG/S**
- ④ - Blow gun mod. **PA**
- ⑤ - Spiral hose with fittings

SEKUR KIT 1/CEE

Ref. 100010/O

Kit of 5 accessories same as SEKUR KIT 1 but with:

- EEC standards inflating gun mod. **PG/S CEE/OM**

Blister dimension: 45x34.5 cm

Weight: 2.100 kg

Package: 10 pcs



SEKUR KIT 2

Ref. 100020

Kit of 5 accessories for compressors including:

- ① - Paint spray gun mod. **PRIMA** with gravity cup Ø 1.5
- ② - Washing gun mod. **NE**
- ③ - Inflating gun mod. **PG/S**
- ④ - Blow gun mod. **PA**
- ⑤ - Spiral hose with fittings

SEKUR KIT 2/CEE

Ref. 100020/O

Kit of 5 accessories same as SEKUR KIT 2 but with:

- EEC standards inflating gun mod. **PG/S CEE/OM**

Blister dimension: 45x34.5 cm

Weight: 2.020 kg

Package: 10 pcs



6 FUNCTIONS KIT IN SUITCASE

ESA KIT

Ref. 50516

6 functions modular kit containing.

Including:

- ① - Paint spray gun mod. **PRIMA** with suction cup Ø 1.5
- ② - Spiral hose with fittings
- ③ - Blow gun mod. **PA/4N** with safety nozzle in compliance with OSHA (USA) standards

PA/4N + OSHA nozzle ideal to generate:

- ④ - Washing gun for naphtha
- ⑤ - Air/water gun
- ⑥ - Inflating gun

Clear suitcase: 30x35x12 cm

Weight: 2 Kg



AIR COMPRESSED ACCESSORIES

MICROPRESSURE REDUCER

Ref. 61000/B

Micropressure reducer

Blister dimension: 20x20.5 cm

Weight: 330 g

Package: 6 pcs

See features on page 87 - FITTINGS section



SAFETY VALVE

Ref. 61050/B

Safety valve

Blister dimension: 7x14 cm

Weight: 100 g

Package: 12 pcs

See features on page 88 - FITTINGS section



AIR PRESSURE SWITCH

Ref. 61060/B

Monophase 4 HP air pressure switch

Blister dimension: 20x20.5 cm

Weight: 360 g

Package: 6 pcs

See features on page 88 - FITTINGS section



SPIRAL HOSE

Ref. 60350/B

Nylon spiral hose Ø 6x8. 5 m long with bayonet connections for milled nuts and protective spring

Blister dimension: 20x20.5 cm

Weight: 150 g


Package: 6 pcs



AUTOMATIC COUPLINGS

X100 S - Male

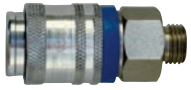
Ref.	Thread	Thread
10501/SB	I	1/4"
10502/SB	I	3/8"



Blister dimension: 7x14 cm - 2 pieces for blister - package: 12 pcs

X300 U - Male


Ref.	Thread
10201U/B	1/4"
10202U/B	3/8"



Blister dimension: 7x14 cm - 1 piece for blister - package: 12 pcs

X100 S - Female

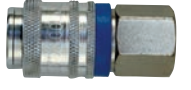
Ref.	Thread	Thread
10601/SB	I	1/4"
10602/SB	I	3/8"



Blister dimension: 7x14 cm - 2 pieces for blister - package: 12 pcs

X300 U - Female


Ref.	Thread
10211U/B	1/4"
10212U/B	3/8"



Blister dimension: 7x14 cm - 1 piece for blister - package: 12 pcs

X100 S - For rubber hose


Ref.	Thread	Øint.-Øext.
10703/SB	I	6x14
10707/SB	I	8x17



Blister dimension: 7x14 cm - 2 pieces for blister - package: 12 pcs

X300 U - With rest


Ref.	Ø int.
10221U/B	6
10222U/B	8



Blister dimension: 7x14 cm - 1 piece for blister - package: 12 pcs

X100 S - For nylon hose with spring


Ref.	Standard	Øint.-Øext.
10801/SB	I	6x8
10802/SB	I	8x10



Blister dimension: 7x14 cm - 1 piece for blister - package: 12 pcs

X300 U - For rubber hose


Ref.	Ø int.
10231U/B	6x14
10232U/B	8x17



Blister dimension: 7x14 cm - 1 piece for blister - package: 12 pcs

X100 S - With rest


Ref.	Standard	Ø int.
10731/SB	S	6
10733/SB	S	8



Blister dimension: 7x14 cm - 2 pieces for blister - package: 12 pcs

X300 U - For rubber hose

Ref.	Ø int.
10241U/B	6x8
10242U/B	8x10



Blister dimension: 7x14 cm - 1 piece for blister - package: 12 pcs

STEEL FITTINGS

Male

FOR X100 S and X300 U

ONLY FOR 300 U and X300

Ref. I	Thread	Ref. S	Thread	Ref. USA	Thread	Ref. GB	Thread	Ref. D	Thread
11001/B	1/4"	11011/B	1/4"	11021/B	1/4"	11031/B	1/4"	11041/B	1/4"
11002/B	3/8"	11012/B	3/8"	11022/B	3/8"	/	/	11042/B	3/8"



Blister dimension: 7x14 cm - 2 pieces for blister - package: 12 pcs

Female

Ref. I	Thread	Ref. S	Thread	Ref. USA	Thread	Ref. GB	Thread	Ref. D	Thread
11101/B	1/4"	11111/B	1/4"	11121/B	1/4"	11131/B	1/4"	11141/B	1/4"
11102/B	3/8"	11112/B	3/8"	11122/B	3/8"	/	/	11142/B	3/8"



Blister dimension: 7x14 cm - 2 pieces for blister - package: 12 pcs

For rubber hose

Ref. I	Øint.-Øext.	Ref. S	Øint.-Øext.	Ref. USA	Øint.-Øext.	Ref. GB	Øint.-Øext.	Ref. D	Øint.-Øext.
11183/B	6x14	/	/	/	/	/	/	11198/B	6x14
11187/B	8x17	/	/	/	/	/	/	11199/B	8x17



Blister dimension: 7x14 cm - 2 pieces for blister - package: 12 pcs

Bayonet

Ref. I	Ref. S	Ref. USA	Ref. GB	Ref. D
11260/B	/	/	/	/



Blister dimension: 7x14 cm - 2 pieces for blister - package: 12 pcs

For nylon hose with spring

Ref. I	Øint.-Øext.	Ref. S	Øint.-Øext.	Ref. USA	Øint.-Øext.	Ref. GB	Øint.-Øext.	Ref. D	Øint.-Øext.
11201/B	6x8	/	/	/	/	/	/	/	/
11202/B	8x10	/	/	/	/	/	/	/	/



Blister dimension: 7x14 cm - 2 pieces for blister - package: 12 pcs

With rest

Ref. I	Ø int.	Ref. S	Ø int.	Ref. USA	Ø int.	Ref. GB	Ø int.	Ref. D	Ø int.
/	/	11301/B	6	11311/B	6	/	/	11341/B	6
/	/	11303/B	8	11313/B	8	/	/	11343/B	8



Blister dimension: 7x14 cm - 2 pieces for blister - package: 12 pcs

FITTINGS

Sliding cock - male

Ref.	Thread
12341/B	1/4"



Blister dimension: 7x14 cm - 1 piece for blister - package: 12 pcs

Drain cock - maschio

Ref.	Thread
12372/B	3/8"
12373/B	1/2"



Blister dimension: 7x14 cm - 2 pieces for blister - package: 12 pcs

Bayonet connection with rest

Ref.	Ø int. hose
13060/B	6
13062/B	8



Blister dimension: 7x14 cm - 2 pieces for blister - package: 12 pcs

Bayonet connection male

Ref.	Thread
13011/B	1/4"



Blister dimension: 7x14 cm - 2 pieces for blister - package: 12 pcs

Bayonet connection for rubber hose

Ref.	Ø int. - Ø ext.
13023/B	6x14
13027/B	8x17



Blister dimension: 7x14 cm - 1 piece for blister - package: 12 pcs

Bayonet connection for nylon hose

Ref.	Ø int. - Ø ext.
13181/B	6x8



Blister dimension: 7x14 cm - 2 pieces for blister - package: 12 pcs

Male 1/4" connection with rest for hose

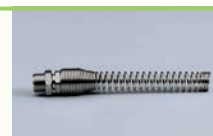
Ref.	Thread	Ø int. hose
13234/B	1/4"	6
13236/B	1/4"	8



Blister dimension: 7x14 cm - 2 pieces for blister - package: 12 pcs

Male 1/4" connection for nylon hose

Ref.	Thread	Ø int. - Ø ext.
13201/B	1/4"	6x8



Blister dimension: 7x14 cm - 2 pieces for blister - package: 12 pcs

Milled nut thread

Ref.	Thread
14000/B	1/4"



Blister dimension: 7x14 cm - 2 pieces for blister - package: 12 pcs

Female 1/4" fitting with milled nut


Ref.	Thread
14010/B	1/4"



Blister dimension: 7x14 cm - 2 pieces for blister - package: 12 pcs

Male 1/4" fitting with milled nut


Ref.	Thread
14021/B	1/4"



Blister dimension: 7x14 cm - 2 pieces for blister - package: 12 pcs


T fitting with milled nut

Ref.	Thread
14040/B	1/4"



Conical nipple


Ref.	Thread
14131/B	1/4" - 1/4"
14132/B	3/8" - 3/8"
14134/B	1/8" - 1/4"
14137/B	1/4" - 3/8"
14138/B	3/8" - 1/2"



Blister dimension: 7x14 cm - 2 pieces for blister - package: 12 pcs

Extension


Ref.	Thread
14175/B	1/4" - 1/4"



Blister dimension: 7x14 cm - 2 pieces for blister - package: 12 pcs

L fitting


Ref.	Thread
14301/B	M 1/4" - F 1/4"
14311/B	F 1/4" - F 1/4"
14316/B	M 1/4" - F 1/4"



Blister dimension: 7x14 cm - 2 pieces for blister - package: 12 pcs

Double milled nut


Ref.	Thread
14030/B	1/4"



Blister dimension: 7x14 cm - 1 piece for blister - package: 12 pcs

Cylindrical plug

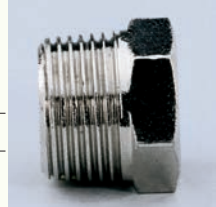
Ref.	Thread
14251/B	1/4"



Blister dimension: 7x14 cm - 2 pieces for blister - package: 12 pcs

Conical reduction


Ref.	Thread
14152/B	3/8" - 1/4"
14153/B	1/2" - 3/8"
14154/B	1/2" - 1/4"



Blister dimension: 7x14 cm - 2 pieces for blister - package: 12 pcs

Double female


Ref.	Thread
14201/B	1/4" - 1/4"
14202/B	3/8" - 3/8"
14207/B	1/4" - 3/8"



Blister dimension: 7x14 cm - 2 pieces for blister - package: 12 pcs


T fitting

Ref.	Thread
14341/B	1/4"



Blister dimension: 7x14 cm - 2 pieces for blister - package: 12 pcs

Y fitting female/male/female

Ref.	Thread	
14321/B	1/4"	


Blister dimension: 7x14 cm - 2 pieces for blister - package: 12 pcs

Male plug "D" with milled nut

Ref.	Thread	
11045/B	1/4"	

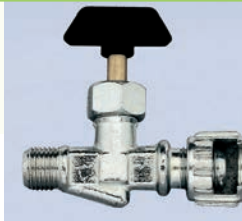
Blister dimension: 7x14 cm - 2 pieces for blister - package: 12 pcs

Bayonet seals

Ref.	Thread	
60920/B	1/8"	


Blister dimension: 7x14 cm - 10 pieces for blister - package: 12 pcs

Needle air line tap male with milled nut.

Ref.	Thread	
12010/B	1/4"	

Blister dimension: 7x14 cm - 1 piece for blister - package: 12 pcs

Mini ball valve male-male

Ref.	Thread	
12131/B	1/4	

Blister dimension: 7x14 cm -1 piece for blister - package: 12 pcs

DISPLAYS

Specifically designed to display products and keep them tidy, Walmec displays enrich the sales point, thanks to their functionality and attractive design.

From the blow guns display to the original and practical rotating shelf display for fittings.

VENTO

Ref. 60949

Carton display containing:

- 5 PA/6 Ref. 50065
- 3 PA/6L Ref. 50066
- 1 PA/6LL Ref. 50067

Display dimension: 43x25 cm x h 41 cm
Weight: 2.8 Kg



JUNIOR

Display for fittings with 4 shelves containing:
- X 100 S couplings - fittings - plugs - connections

With fittings - weight 14.5 Kg

Ref. 60930

Empty - weight 4 Kg

Ref. 60930/V

Display dimension: 35x80 cm



MASTER

Display for fittings with 7 shelves containing:
- X 300 U couplings - fittings - plugs - connections

With fittings - weight 31 Kg

Ref. 60931

Empty - weight 6 Kg

Ref. 60931/V

Display dimension: 35x150 cm



PROFESSIONAL

Display for fittings with 11 shelves containing:
- X 300 U couplings - fittings - plugs - connections
- 12 PA/4N blow guns
- 6 PG/S inflating guns

With fittings - weight 45.5 Kg

Ref. 60932

Empty - weight 9 Kg

Ref. 60932/V

Display dimension: 35x193 cm



ROLLO

Ref. 60930/RR

Tidy keeper on swiveling wheels.
Featuring: 4 coloured shelves, 4 T shape dividers
Shelves: polypropylene
Handle: handy grip for carrying
Wheels: 4 swiveling wheels

Display dimension: 35x80 cm
Weight: 4.5 Kg



UPDATES AND SUPPLEMENTS

General sales conditions

Validity

The following standardised general sales conditions govern the sales agreements, and are integral part of our agreements even when orders are collected by fax, by phone, by e-mail, via internet or verbally.

The provisions, the conditions and any other incidental contractual negotiations, in the case they depart from these general conditions, must be stated and accepted in written, otherwise they will be invalid and without effectiveness.

This catalogue cancels and replaces the previous ones and it may be changed at any time without notice and without this entails any right by the Customers to receive compensation.

Offers and Finalisation of the Contract

Technical descriptions and pictures are reported purely as an indication of the characteristic of the Product, but they are not in themselves promises or essential quality of the supplied Products and therefore they may be changed at any time up to the finalisation of the contract. Requests for quotations (Offers) are not in any case a "confirmed sales order". Further to said requests, Walmec S.p.A. will proceed exclusively in order to provide the required information.

Offers made by Walmec S.p.A. are not binding for the seller. The order made by the customer is binding and irrevocable according to article 1329 Italian Civil Code and for a period of 8 (eight) days after its receipt. Walmec S.p.A. has the right to accept the order either by written confirmation or by starting the execution of the contract, by shipping the ordered Products. The contract is believed to be finalised at Walmec S.p.A.'s commercial offices, via Trieste 10, Santa Lucia di Piave, Treviso, Italy. All orders transmitted are always to be considered "subject to approval" by Walmec S.p.A.

Orders for a total value lower than EUR 500.00 (five-hundred/00) are not accepted, except in the case of orders made solely for spare parts which will only be despatched on cash in advance with carried prepaid.

Prices and Terms of Payment

Unless otherwise written agreement entered by the Parties, Walmec S.p.A. applies to the finalised contract prices quoted on its catalogues and on its price lists effective at the time of the receiving of the order. Prices are quoted net of V.A.T. due according to the Italian Law in force.

Title of Products sold is of Walmec S.p.A. until the full and total payment, and any down payment made will be retained as reimbursement of damages and expenses.

Invoices issued by Walmec S.p.A. must be settled within the written terms agreed by the Parties, at the creditor's domicile, according to Article 1182 Italian Civil Code, even if the payment is made by bill of exchange or cash order.

Being expired the stated payment term, Walmec S.p.A. is authorised to draw a bill without any notice.

In case of late payment beyond the terms agreed and specified on the invoice, interest will be charged and it will be equal to the legal interest rate increased by seven points and related expenses.

In case of late payment Walmec S.p.A. has the right to require the fulfilment of any pending order by asking either advance payment or cash on delivery.

Freight charges will be accrued on the invoice except different agreement by the Parties. Packaging is billed at cost and it is not accepted in return.

Delivery Terms

Walmec S.p.A., in case of orders of remarkable quantity, has the option to make partial delivery.

Delivery terms are never binding; a possible missed delivery either fully or partially, or a simple delay, does not constitute right to recover any damage unless it was explicitly agreed in written form and accepted by the Parties.

In case the Parties have written agreed the Customer will make a down payment, the delivery term starts from the receipt of the agreed sum.

Shipping Risks

Products are shipped with all the risks in charge of the Customer, even if the Products are sold free domicile. Unless otherwise agreed by the Parties in written form, Walmec S.p.A. ships the Products to the address indicated by the Customers.

If the shipment is delayed because of reasons attributable to the customer, the risk in the title or for deterioration of the Products is in charge of the customer starting from the day when Walmec S.p.A. informs the customer to be ready to the shipment of the Products.

In all cases of force-majeure events, such as strikes, stoppage of transport, etc., Walmec S.p.A. will be exempted by its duty concerning the shipment, whereas such events could not be claimed by the customer as reason to annul the order.

Walmec S.p.A. will not bear any responsibility for any possible shortage of materials or damages of the parcels due to shipment made using parcels or train package. We advise our customers to check the quantity of the goods and the shipment conditions before taking delivery of the Products.

Title Retention Agreement

Walmec S.p.A. has the title on the supplied Products up to the integral payment of the due amount and of any other sum due by the Customer for any reason.

Risks and responsibility related to the use of the supplied Products are in charge of the customer starting from the time of the delivery.

Guarantee for Product Defects

The customer, at the time of the delivery, has the burden to check if the supplied Products match with the submitted order both in quantity and quality and if they are free from defects noticed with a quick view using the normal diligence.

Complaints for damages caused by the transport shall be sent directly to the carrier at the time of the receiving of the Product by specific note on the forwarding agent's delivery note, giving notice to Walmec S.p.A. within and not later than 8 (eight) days. Being expired said term, Products are considered received and accepted.

Walmec S.p.A. guarantees the conformity of the supplied Products according to what is reported in the catalogue. Products supplied are covered by 12 (twelve) months warranty period, starting from the delivery date, against construction and material defects. In any case the guarantee is not applicable if the customer is not able to prove having made a correct use, maintenance and preservation of the Products. Walmec S.p.A. denies any liability for damages to persons, animals and things due to an inaccurate and improper use of the Products.

Repairs

Shipments for repairs must be delivered carriage paid to Walmec premises located in via Trieste 10, Santa Lucia di Piave, Treviso, Italy, and will be sent back DDU charging the freight costs on the invoice. Repairs made during the warranty period will be sent back DDU.

Applicable Law and Jurisdiction

Any dispute arising in connection with the present contract shall be finally settled in front of the Treviso Court. This contract is governed by the Italian Law.

WALMEC SPA
WALMEC ITALY HEADQUARTERS

VIA TRIESTE 10, 31025 - S.LUCIA DI PIAVE - (TV) - ITALY
TEL +39 0438 6611
FAX: +39 0438 661333
E-MAIL: WALMEC@WALMEC.COM
WEB: WWW.WALMEC.COM

PRODUCTION PLANT

VIALE DELLA VITTORIA 33, 24054 - CALCIO - (BG) - ITALY

